

PowerCap® Infinity®

PRODUCT CODE: CEA646-001-100

POWERCAP® INFINITY®: JSP'S FIRST FOUR-IN-ONE HEAD UNIT, OFFERING COMPLETE ABOVE THE NECK PROTECTION

**TECHNICAL
SPECIFICATION**

RESPIRATORY PROTECTION

INSTRUCTIONS FOR USE

The airflow of the unit should be checked prior to use

Fit helmet on head and tighten wheel ratchet to ensure the correct fit

For adequate respiratory protection this helmet must be worn with the peak facing forward and adjusted to the size of the user's head

To remove saturated filters rotate each filter upwards and remove all parts and dispose of them

To fit new filters align the fittings on the filter with those on the filter housing and twist in to place.

Care must be taken to ensure that the correct respiratory protection device is selected for the work to be carried out. If in doubt seek professional advice



FILTER CASING:

ABS (Acrylonitrile Butadiene Styrene)



HELMET:

ABS (Acrylonitrile Butadiene Styrene) helmet

SKIRT:

Foam-backed natural rubber

FACESHIELD:

Polycarbonate



**POWERCAP
INFINITY®**

PERFORMANCE

Powercap® Infinity® offers respiratory protection to TH3, with an Nominal Protection Factor of 500 (UK APF 40).

Grade B rated visor offers impact protection up to 270 mph, with an optical rating of Class 1, ensuring that users are able to wear the unit for the necessary time without strain. The visor is also anti-scratch – a necessity for industrial work.

The unit uses our EVO®5 helmet, with ABS shell and Evolution 3D adjustment harness, offering unrivalled comfort for all day use.

CLEANING & MAINTENANCE

The plastic parts can be cleaned with a damp cloth. Chemical or abrasive cleaners should not be used.

Do not immerse the unit in water.

The unit should be stored out of direct sunlight, away from chemicals and not exposed to extremes of temperature.

CONFORMITY

Meets the requirements of EN 12941:1998 TH3 as a Respiratory Protective Device

EC Type Examination Certificate Number 59716

Faceshield: EN166:2001 1.B

Helmet: EN 397:2012+A1:2012

PowerCap® Infinity®

PRODUCT CODE: CEA646-001-100

POWERCAP® INFINITY®: JSP'S FIRST FOUR-IN-ONE HEAD UNIT, OFFERING COMPLETE ABOVE THE NECK PROTECTION

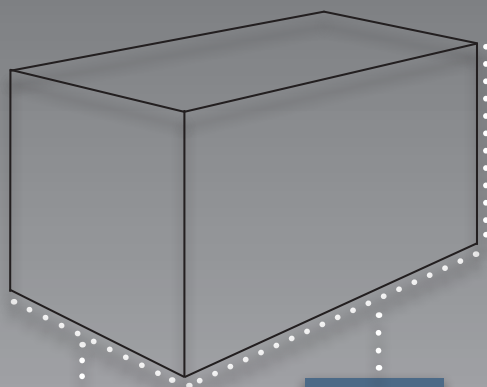
**TECHNICAL
SPECIFICATION**

RESPIRATORY PROTECTION

DIMENSIONS OF OUTER PACKAGING

Quantity: 1

Weight: 1.6kg (Approx)



WIDTH:
240mm

LENGTH:
377mm

HEIGHT:
265mm

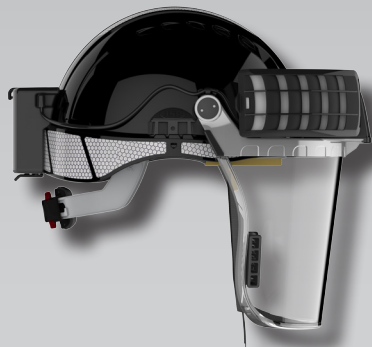
DIMENSIONS OF UNIT:

Height: 300mm (Approx.)

Width: 250mm (Approx.)

Depth: 350mm (Approx.)

Weight: 1.1kg (Approx.)



FEATURES & BENEFITS

The unit features 'Heads-Up Display' and audible warnings for battery and filter condition, enabling the wearer to manage their usage effectively.

User responsive smart PPE: real-time diagnostics that monitor the system twice a second allow the user to identify and differentiate between any issues with the unit.

The battery on the Powercap Infinity is fully rechargeable, offering an 8 hour battery life.

Key elements of the unit are user-replaceable, allowing easy maintenance and cleaning.

Sonis® ear defenders available as an optional accessory.

Powercap® Infinity's optimal air flow, achieved through working with motorsports aerodynamists, prevents misting of the visor and the common side effect of dry eyes, which can occur with positive air pressure respiratory

LIMITATIONS OF USE

Protection will only be offered if the PowerCap® Infinity® is fitted correctly

Materials, when in contact with the skin, may cause allergic reactions to susceptible individuals. If this occurs leave the hazard area, remove the mask and seek medical advice

Check airflow with the Test Unit before use. Re-test outside of area of use at regular intervals to ensure flow

Use in well-ventilated areas only, which are not deficient in oxygen and do not contain explosive atmospheres

Ensure the skirt is fitted neatly around the face before entering the hazard area

Do not use where exposure to chemical gases may be experienced

The use by date of the filter is printed on the outside of the cartridge

The working life of the filters depends on many factors including work rate, airflow and concentration of any contaminant in the atmosphere

To obtain maximum workable life from the unit, allow the battery to run down fully before recharging