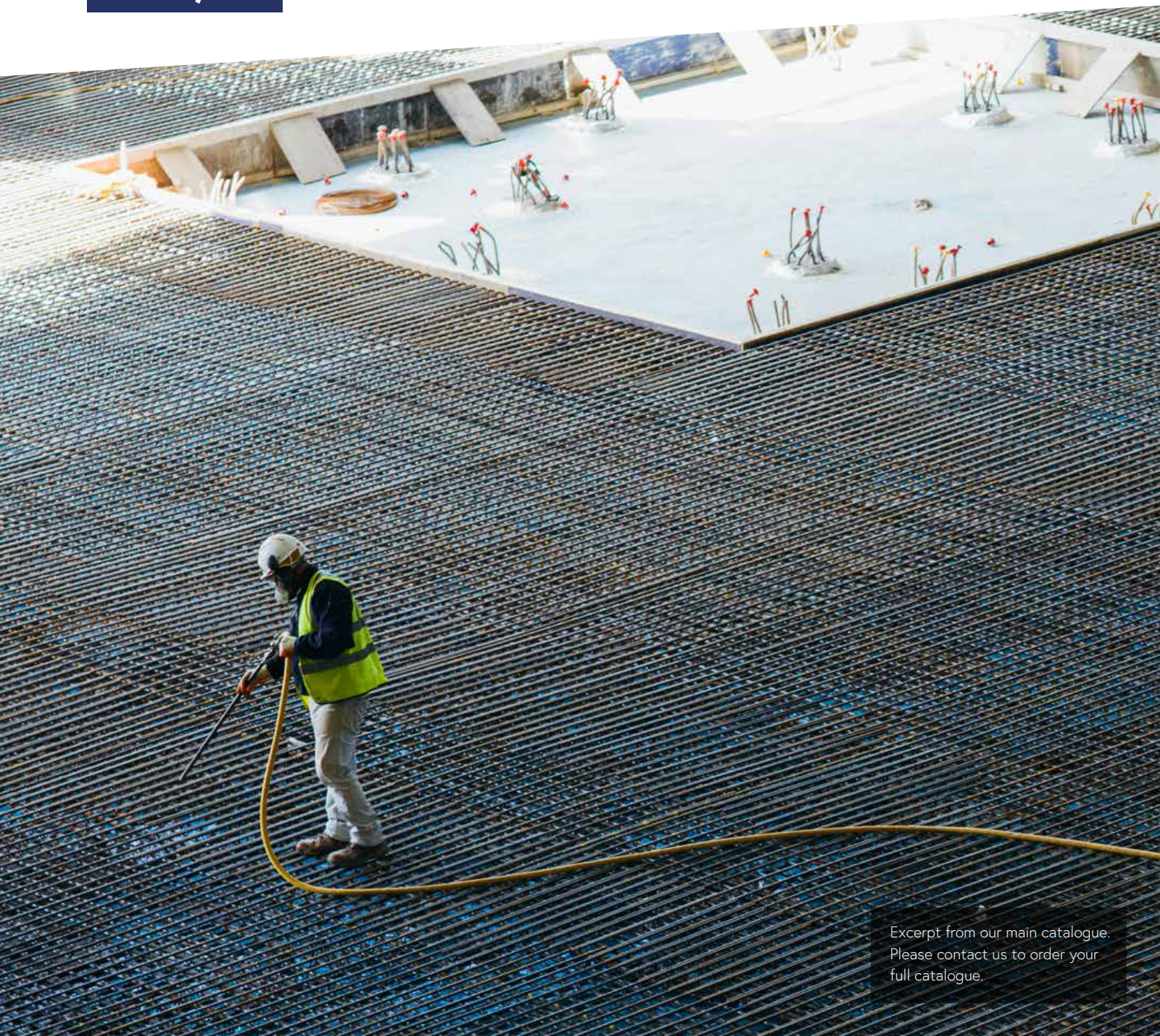


Respiratory Protection

Delivering safety, welfare, site equipment
and tools for the construction industry

2019/20





Our Mission and Values

Our Mission

For over 40 years, we've worked on the principle that safety and productivity go hand-in-hand; and for us, safety starts and finishes with people.

Listening to and caring about our own people and our clients alike means we can deliver what everyone wants: the right product, into the right hands, at the right time, without fail – so everyone goes home safe, and happy too.

That's why we'll still be here, in another 40 years, doing what we've always done best: putting people first.

Our Values

We care about people.

We put people first. We invest in personal relationships. We look after our clients and each other.

We're positive & helpful.

We approach every interaction with a 'can-do' attitude. When we encounter challenges, we work together to find the solution.

We go the extra mile.

We don't just tick boxes. We ask ourselves "what does the client really need?" and then find a way to deliver it.

We're committed to learning and innovation.

We're always learning. We use that knowledge to help our clients, and to consistently lead on innovation.

We strive for excellence.

We seek to be the very best at what we do, so that our clients, in turn, can excel and thrive.

Why We're Different

There are plenty of great products on the market, and plenty of ways to source them.

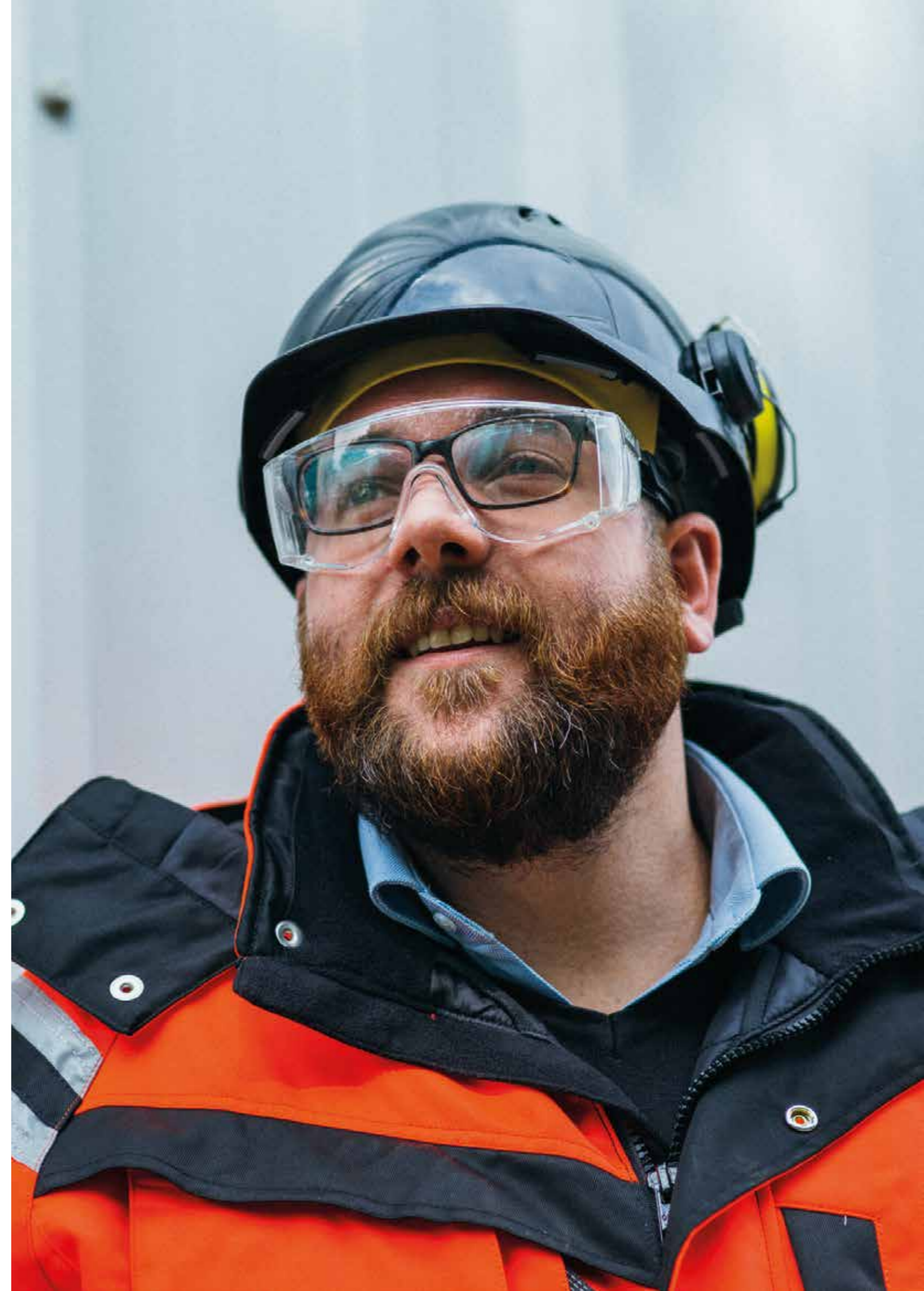
But we know, as you do, that ensuring the safety, wellbeing and productivity of each person working on your site is not as simple as buying good products. For us, safety and wellbeing in construction starts and finishes with people.

Getting to know our clients, and their workforce, is the most fundamental part of what we do. Put simply, if we really understand your goals and challenges – both as a business, and as individuals – then we'll be better equipped to provide what you really need, when you need it. That's good for you, because you and your workforce will be able to get on with the job safely and happily. And it's good for us because the trust it generates between us will help develop a long-term partnership.

This belief in working for mutual advantage is at the heart of how we run our business, and it starts with our own staff. They enjoy free meals at work, an on-site gym, and a fantastic benefits package. Our thinking is simply that if we look after them well, then each member of our team – from senior managers to delivery drivers – will go out of their way to look after you.

Because in the end, each of our clients is different, and their needs evolve and develop as their businesses grow. If we're to support you properly, then we need to be 100% committed to understanding those needs on an ongoing basis, and be prepared to do whatever it takes to deliver them. Whether that means a bespoke product innovation, more data and information to help you manage budgets, another pair of eyes on a problem you've been grappling with, or just faster deliveries, we're there to help you find the answers.

In our view, that's the best way for us ALL to succeed.



Our History

1976

Our story began over 40 years ago, when Richard Lynes started Beaver Construction Supplies in January 1976, running his business out of his home and the greenhouse.

He started to supply existing contacts with tools and access equipment, but soon realised that they all shared a much greater common need: stocked architectural ironmongery. Lightweight metal frames were enabling fast, inexpensive and flexible construction of office space at that time, but typical lead times for these materials were as long as 12 weeks, hampering progress on sites.

To solve this problem, Richard built partnerships with manufacturers in the Midlands, drew up monthly supply contracts, and invested heavily in stock. The result was a massive reduction in lead times for his clients, and as a result the business began to grow rapidly.

1988

Business boomed in the 80s, but in order to focus more on his family, who were still very young, Richard sold Beaver Construction to begin a new venture, OnSite Supplies, trading from Horley in Surrey. This business grew steadily, supplying tools and site equipment for the construction industry and agricultural merchants.

"Something we learned was there is always a quality end to a market. Not just quality brands, but products and services fit for purpose; it's what you do and how you do it with these products, knowledge, care and a passion to serve clients' needs." – Richard Lynes

1999

A decade later, Richard, now supported by his sons Warren and Damian, had cemented OnSite Supplies' reputation as a leading supplier to the construction industry.

They expanded their offer to the industry further by acquiring Highline, a quality workwear company.



Operating from home, out of 4 garages in Redhill



Us at work during the early days

2004

In January 2004, Richard and his family invested in the current premises in Three Bridges, Crawley, West Sussex, which they rebuilt. They officially moved into the new offices and warehouse space in July 2004.

2011

Acquisition of Andrew Beattie & Co., a welding and consumable distribution company.

2012

By 2012 it became clear that having outgrown its old premises, the business had outgrown its original name. It had become much more than just a supplier to its clients, working with them continually to understand their needs and challenges, offering them the most suitable products and processes, and providing bespoke advice.

Richard, Warren and Damian decided to reflect this shift from supplier to business partner by renaming the business as OnSite Support Ltd, in January 2012.

"OnSite Support continues to look ahead to provide our clients with more than merely supplies. Our goal is to provide support for the client with reliable, innovative processes all encapsulated in our business to give the OnSite Experience." – Richard Lynes

2016

OnSite Support underwent a state of the art fit-out and rolled out the OnSite Experience for clients, an articulation of our commitment to an exceptional customer experience of knowledge, honesty, friendliness, helpfulness and positivity.

2018

With the business continuing to grow, Richard formally passed over the reins to his sons Warren and Damian. Together, they commissioned a redesign of the OnSite Support brand, and developed an updated set of values – contained in this document – to reflect the past, present and future of the company.



Our current headquarters



State of the art fit-out in 2016



Our Home

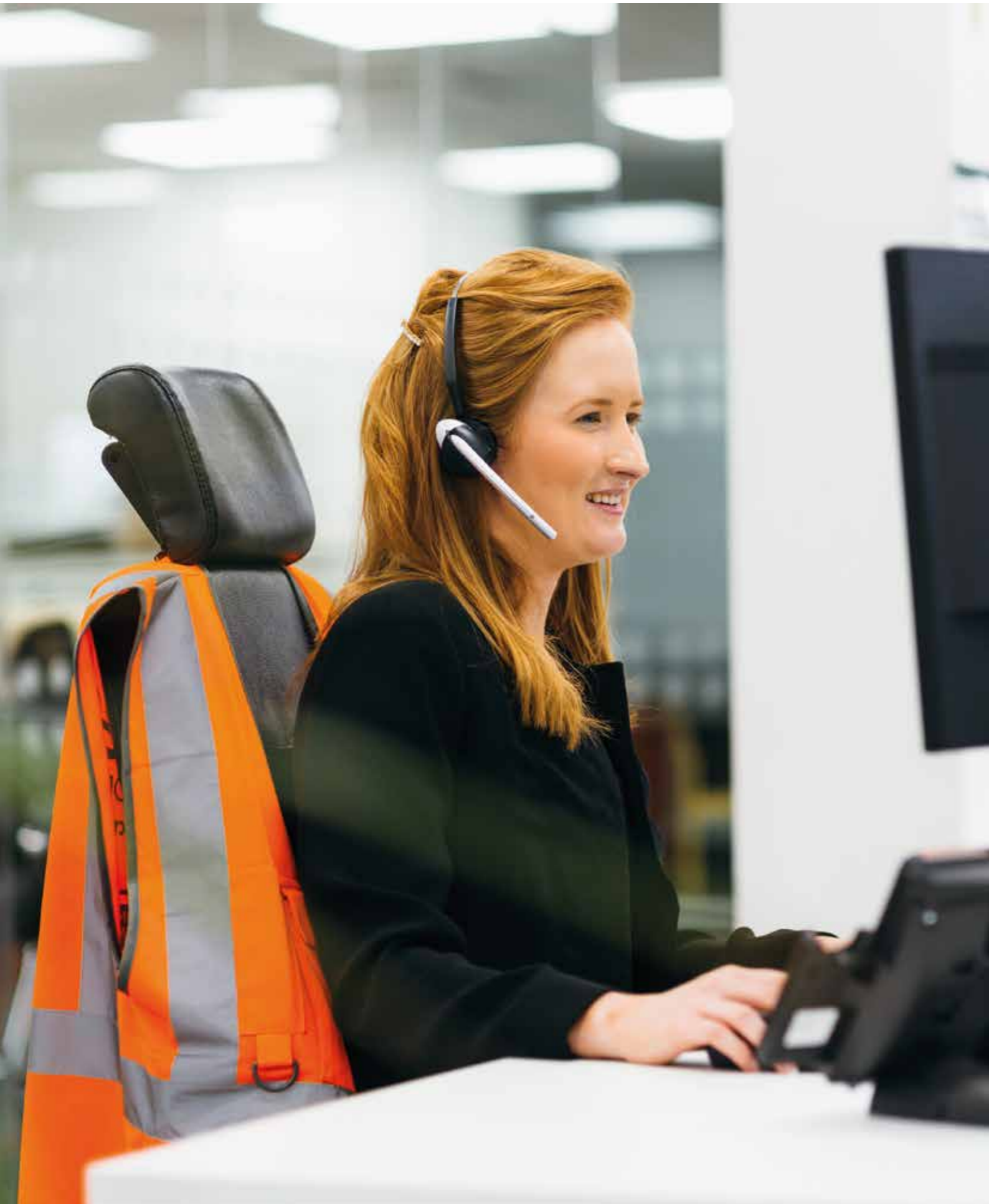
Situated in Crawley, close to Gatwick Airport, the M23 and M25, our headquarters is the permanent base for over 50 staff, as well as housing our trade counter and warehousing for well over £2.5m of stock.

This means all the different roles within our team can easily collaborate to make sure our clients get what they need.

Our headquarters also include a gym, state-of-the-art meeting rooms, and facilities which enable us to provide meals on-site for all our staff. Just as on a construction site, a happy workplace is a productive one, and we pride ourselves on creating a positive and welcoming atmosphere.

We look forward to showing you around soon.





What We Offer

As a business which believes in putting people first, delivering exceptional client service is at the heart of what we do.

Strong relationships help us deliver great service, which is why each of our clients have dedicated, named Account Managers to ensure that we're constantly listening, understanding your challenges and responding to your needs. We commit to responding to all requests and queries within one hour, and although we can't always provide instant solutions, we believe in doing whatever it takes to find the answer for you and keeping you updated throughout the process.

As a family owned company, we cherish the partnerships we have with our clients, and we look forward to working with you. We offer a number of practical services that set us apart from many of our competitors, and which our clients value highly:

Fast Delivery – Supporting site teams with urgent and important deliveries is one of the most valuable features to the clients of OnSite Support. We offer same-day and next-day deliveries on a wide range of products.

Special Product Sourcing – Every job is different and brings new challenges. We understand that sometimes, supplies and equipment have to be modified to suit the parameters of a specific requirement. Talk to us to tap into our expertise!

Corporate Uniform Personalisation and Branding Services – A key part of our business is that we offer a garment making and personalising service. From one garment to thousands, we're experts in the many methods of garment marking, including embroidery, heat-seal transfers and screen printing.

Fully Bespoke Workwear Branding Service – We can work with you to create a unique corporate image entirely from scratch. Our team will listen to your requirements, visit the working environments and get an understanding of your brand values in order to get the look and feel just right; drawing on our experience in fabrics and garment function to develop fit-for-purpose ideas and turn them into practical, visually effective and relevant garments that exceed expectations.

Product Demonstration – With an innovative product range, clients often need to see and trial before the purchase. We'll bring to you a range of the right products, and run the necessary trials and reports to find the best solutions and accessories to maximise success.

Training – We'll not only supply the right solution, but also help your team to use the solution properly. We invest significantly in product and development training of the OnSite Support team, and we want to pass this expertise on to you.

eProcurement – With every passing day, OnSite Support improves its e-procurement system. We can demonstrate real-world savings through simple site-based systems which are easy to implement, reduce administration and improve the speed and efficiency of your procurement system. Back-office savings in POD and invoice processing can be demonstrated and our feedback loops ensure collaboration with clients further improve our platform, for the benefit of all.





Respiratory protection

Respirators may be tight-fitting like half masks, which cover the mouth and nose or full facepieces that cover the face from the hairline to below the chin. These can be either reusable or disposable and all require face-fit-testing to the user. For this reason, people wearing these masks are to be clean-shaven.

In some cases, tight fitting Respiratory Protective Equipment (RPE) may not be an option. This can be due to face shape, skin conditions or facial hair. In these situations, loose fitting RPE like hoods or helmets with positive pressure air supplies can be used to ensure clean, filtered air reaches the wearer.

When protecting against particles, you'll be using a filtering facepiece (FFP). These will be rated from 1 to 3, with 1 offering the lowest level of protection. In a toxic environment with non-fibrogenic particles, a disposable filtering facepiece of level FFP1 or 2 is more than acceptable. As soon as more harmful and irritant particle types are likely around, an FFP2 mask must be used. This is regarded as the bare minimum in construction.

When working in an environment with silicates, respirable dusts, mists and fumes, FFP3 must be used. To put it simply, whenever construction products are being cut which aren't timber or metal, it's likely an FFP3 mask is required.

For oxygen deficient environments, highly toxic or contaminated environments and smoke-filled areas, positive pressure, self-contained breathing apparatus and are encouraged to seek specialist assistance in that area.

There are a number of standards and designations surrounding respiratory protection, which can serve to confuse things, but we have listed the main ones on the next page. If you need help on any of this, please get in touch with us.

Respiratory protection

Safety standards



Covers full face masks. Any visors are covered under EN166 and filters are under separate standards.

Example product:



JSP Force 10 Full Face Mask MA2JF10 – page 109



Covers quarter or half-mask equivalent. Again, filters will be released to a different standard.

Example product:



JSP Force 8 Half Mask MA2PTC1 – page 108



Any filtering facepiece provided with the filter built into the respirator and will be rated as either FFP1, 2 or 3. An expiry date will be printed on the mask and it will be marked R (Reusable) or NR (Not Reusable) as appropriate. A non-reusable face mask is regarded as a single-shift mask. A P1 filter is 80% efficient, a P2 filter is 94% efficiency and a P3 filter is 99.97% efficient

Example product:



Betafit FFP3 Valved Masks MA1303V – page 107



FFP rated filters for full face, half and quarter masks need to adhere to this standard. They will be marked with their FFP rating (1, 2 or 3) and also marked NR or R to signify reusable or not reusable in the same way that an FFP mask will be. Non Reusable filters should be changed at the end of a shift. A P1 filter is 80% efficient, a P2 filter is 94% efficiency and a P3 filter is 99.97% efficient



(originally EN 141 and 371) The minimum requirements for gas and combination gas/particulate filters. It classifies filters into various types such as A, B, E, and K as well as categories such as filter capacities.

It is important that you know the chemical or solvent you are looking to protect against so that the correct filter can be chosen. Combination filters are available where a range of airborne, respirable hazards exist.



Powered filtering devices with helmets or hoods conform to 12941 and powered devices with just a mask are covered by EN 12942. This standard takes into account a lot of different variables and markings so it's important to know what you are protecting against. If it's just particles, you'll be able to use an FFP rated filter, but where solvents, chemicals, fumes, vapours or low boiling point fluids are involved, specialist or dedicated filters may be required and this category may not be able to support you.

Example product:



JSP PowerCap Infinity MA2PC1 – page 110

We offer a Respiratory Hazard Audit and Respiratory Face Fit Testing & Train the Trainer Sessions. See page 14 for more information.

Betafit FFP3 Valved Masks

- Box of 5
- Very low breathing resistance due to the latest in filter medium technology
- Soft face seal reduces the risk of irritation
- Classification: **FFP3 NR**
- Outer cover: polypropylene
- Filter media: melt Blown P.P. + P.E.
- Inner cover: polyester
- Headstrap: PE woven elastic
- Valve cover: PP/ABS
- Valve diaphragm: synthetic rubber
- Standard: **EN149:2001+A1:2009**



Code: MA1303V

Betafit FFP2 Valved Masks

- Box of 10
- Very low breathing resistance due to the latest in filter medium technology
- Soft face seal reduces the risk of irritation
- Valve products increase user comfort by lowering CO₂ and heat build-up
- No metal parts
- Classification: **FFP2 NR**
- Outer cover: polyester
- Filter media: Melt Blown P.P. + P.E.
- Inner cover: polypropylene
- Headstrap: PE woven elastic
- Valve cover: PP/ABS
- Valve diaphragm: synthetic rubber
- Standard **EN149:2001+A1:2009**



Code: MA1302V

Constructor FFP2 Valved Masks

- Box of 10
- Offers protection against fine dust, water and oil-based mists and fumes
- Valve products increase user comfort by lowering CO₂ and heat build-up
- **EN149**



Code: MA1EC2V

Constructor FFP3 Valved Masks

- Box of 5
- Offers protection against fine dust, water and oil-based mists and fumes
- Valve products increase user comfort by lowering CO₂ and heat build-up
- **EN149**



Code: MA1EC3V

FFP2 Valved Fold Flat Masks

- Box of 20
- Individually wrapped
- Offers protection against fine dust, water and oil-based mists and fumes
- Valve products increase user comfort by lowering CO₂ and heat build-up
- **EN149**



Code: MA1MF2

FFP3 Ladies Fit Valved Masks

- Box of 5
- Specifically designed for smaller faces, making it ideal for women in construction or those with smaller face shapes
- Very low breathing resistance due to the latest in filter medium technology
- Soft face seal reduces the risk of irritation
- Valve increase user comfort by lowering CO₂ and heat build-up
- Mask has no metal parts
- Classification: **FFP3 NR**
- Outer cover: polypropylene
- Filter media: melt Blown P.P. + P.E.
- Inner cover: polyester
- Headstrap: PE woven elastic
- Valve cover: PP/ABS
- Valve diaphragm: synthetic rubber
- Standard: **EN149:2001+A1:2009**



Code: MA1L03V

Respiratory protection

Force8™ Half Face Mask with P3 RD PressToCheck Filters

- With P3 RD PressToCheck filters
- The Force8™ twin cartridge half mask with Typhoon™ valve offers superior low breathing resistance and a four-point suspension harness with quick-release buckles
- Made with a durable thermoplastic rubber offering a superior fit to most face shapes
- Accepts the full range of low-profile Force8™ filters giving the Force8™ the flexibility to be used for many applications, providing filtering protection against particulates, many gases and vapours
- Winner of the BSIF Product Innovation Award
- Durable thermoplastic rubber mask for superior fit to most face shapes
- CR2™ reflectivity: reflective strips create increased visibility in low-light environments for added safety
- Typhoon™ exhalation valve: low-resistance exhalation valve for easy breathing, with stable mask configuration
- Force™ filters: cost-effective filters available with low-profile angle for minimum visual impairment
- Daily face-fit reassurance
- Passes dolomite
- Protection against construction dust
- Improved hygiene
- Inhalation valve for easy maintenance
- Low-profile covers protect filters
- Medium
- Grey
- Conforms to **EN140** (face piece), **EN14387:2004** (filter performance), **EN143:200** (filter performance)



Code: MA2PTC1

JSP Force8™ Half Masks (excluding filters)

- With Typhoon™ valve offers superior low breathing resistance and a four-point suspension harness with quick-release buckles
- Made with a durable thermoplastic rubber offering a superior fit to most face shapes
- Accepts the full range of low-profile Force8™ filters giving the Force8™ the flexibility to be used for many applications, providing filtering protection against particulates, many gases and vapours
- Winner of the BSIF Product Innovation Award
- Durable thermoplastic rubber mask for superior fit to most face shapes
- CR2™ reflectivity: reflective strips create increased visibility in low-light environments for added safety
- Typhoon™ exhalation valve: low-resistance exhalation valve for easy breathing, with stable mask configuration
- Force™ filters: cost-effective filters available with low-profile angle for minimum visual impairment
- Daily face-fit reassurance
- Passes dolomite
- Protection against construction dust
- Improved hygiene
- Inhalation valve for easy maintenance
- Low-profile covers protect filters
- Conforms to **EN140** (face piece), **EN14387:2004** (filter performance), **EN143:200** (filter performance)



Size:	Code:
Large	MA2JF8-L
Medium	MA2JF8-M
Small	MA2JF8-S

Winner of the BSIF Product Innovation Award

JSP Force8™ Mask Belt Bag with Storage Compartments for Filters

- Helping you to maximise the safety and lifespan of your respirator



Code: MA2JFBB1

JSP Force8™ Half Mask Face Size Guide

- Accessories for your JSP Force 8™ half-mask – helping you to maximise the safety and lifespan of your respirator



Code: MA2PTG1

JSP Force10™ Full Face Twin Cartridge Mask

- Force10™ Full Face mask compatible with P3 RD PressToCheck filters
- Fully-adjustable, five-point suspension harness for optimum fit and comfort
- Quick-release buckles for ease of use
- Panoramic anti-mist, anti-scratch design providing impact protection
- Exhalation valve to reduce heat and moisture build-up
- Filters available with low-profile angle design
- Full face twin cartridge mask with Class 3 heavy-duty filter connections
- Completely clear panoramic visor maximises light levels within the mask giving optimum visibility
- Lens also offers impact protection and has anti-mist and anti-scratch coating as standard
- Mask moulds to the shape of the face for an excellent seal, and is also padded for extra comfort over prolonged use
- Accepts any of the wide range of low-profile Force8™ filters designed for minimal visual impairment
- Conforms to: **BS EN136:1998**



Code: MA2JF10

JSP Force8™ and Force10™ PressToCheck Filters

- One pair
- Daily face-fit reassurance
- High-efficiency dust protection
- Protects against – silica, concrete and stone cutting, plaster, welding (ferrous and lead), hardwood, softwood, asbestos removal (Force 10™ only), fibres and fibreglass, water based, manual prep, powered prep, glyposate (weed killer)
- Passes dolomite
- Improved hygiene
- Inhalation valve for easy maintenance
- Low-profile covers protect filters
- Conforms to **EN143**



Product:	Code:
P3 RD	MA2PTC5
ABEK1 P3	MA2PTC7

Respiratory protection

JSP PowerCap Infinity, Fully Integrated, Powered-Air Respirator

- One of the most innovative pieces of respiratory PPE on the market
- With a weight of just 1200g, it is lightweight and comfortable to wear, even for longer periods of time
- No need to Face Fit Test
- Up to 8hr battery life
- Smart monitor adjusts air flow to meet user demands twice per second
- Blast rated user replaceable visor
- Compatible with JSP Sonis and standard ear defenders
- A must for any concreting or demolition environment
- One size
- Black
- **EN12941** and **TH3P R SL** protection to the same standard as a full face mask APF40
- **EN397 LD** and **MM** standard compliance for head protection (LD = Lateral Compressive load, MM = Molten Metal)
- **EN166B** Rated eye and face protection with class 1 optics

Ultimate protection against harmful dust



Code: **MA2PC1**

Replacement Battery Unit for JSP PowerCap Infinity

- Approx. 8hr life span
- Use with MA2PC1



Code: **MA2PCB**

Replacement Polycarbonate Impact Visor to fit JSP PowerCap Infinity

- Impact visor to **EN166B** to fit the JSP Powercap Infinity
- Bare visor supplied
- Clear
- Use with MA2PC1



Code: **MA2PCV**

Visor Protector to fit JSP PowerCap Infinity

- Pack of 10
- A spare pack of 10 peel-off visor protectors
- Prolong the life of your visor to save down-time in changing it
- Clear
- Use with MA2PC1



Code: **MA2PCVP**

Replacement Pre-filters to fit JSP PowerCap Infinity

- Supplied with two pre-filter covers
- Pair of replacement pre filters, supplied with covers for the JSP Powercap Infinity
- Available as standard pre-filters and nuisance pre-filters
- Use with MA2PC1



Size: Code:
 Pack of 10 (5 pairs) **MA2PC4P-10**
 Pack of 100 (50 pairs) **MA2PC4P-100**

Replacement Visor Seal for PowerCap Infinity

- If there is any damage or wear to the visor seal, it must be replaced
- Seal prevents ingress of material into the wearer's breathing space
- Vital to ensure it remains in peak condition
- Use with MA2PC1



Code: **MA2PCVS**

Replacement FFP3 filters to fit JSP PowerCap Infinity

- Pair of replacement filters for the most innovative pieces of respiratory PPE on the market
- Base filters only: pre filters and covers sold separately
- One pair
- Use with MA2PC1



Code: **MA2PC3**

Moldex 7000 Series Half-Mask Respirator

- 100% PVC-free
- Unique features and benefits for increased worker acceptance
- Lightweight design plus extra-wide sealing area provides all-day comfort
- Drops down for convenient storage around the neck or locks down for custom fit
- Adjustable head cradle and curved neck buckles for extra comfort
- Low-profile, compact design allows a wide field of vision, fits well under welding helmets and with safety glasses
- Maintenance and cleaning are made simple with very few replacement parts
- Available pre-assembled with the most popular cartridge/filter combinations and also as individual components
- Size: M
- **EN140:1998**



Code: **MM7002**

Moldex 7000 Easylock Filter Cartridges ABEK1

- Pack of 5 pairs
- Suitable for series 7000 and 9000 masks
- Particulate filters can either be connected with the gas cartridges or directly with the mask body
- Bayonet connector
- Adaptors and particular pre-filters are not necessary
- Simpler logistics – 30% less parts
- Particulate filters with pleated filter technology – significantly reduces breathing resistance, improves wearer comfort and reduces fatigue
- Gas filters and pre-assembled filters tested and certified to **EN14387:2004+A1:2008**



Code: **MM9400**

Respiratory protection

Moldex P3 Moldex Filters to suit MM7002

- One pair (price per pair)
- Moldex P3 particulate filter to suit the 7000 face piece
- 100% PVC-free



Code: MM9030

Moldex 7000 Half Mask & ABEK1 P3 Filter Cartridge Complete in Lidded Tub

- Pre-assembled mask with ABEK1P3 filters in a resealable plastic storage container
- Size: M



Code: MM7432

Test A Bitrex Solution Ampoules for Face Fit Test Kit

- Box of 6 x 2.5ml
- Sensitivity A Solution for Face Fit Test Kit
- Test A (Sweet) – 2.5ml Ampoule Bitrex® Test Solution



Code: MA1FFS1A

Test B Bitrex Solution Ampoules for Face Fit Test Kit

- Pack of 6 x 2.5ml
- Test B (Bitter) – 2.5ml Ampoule Bitrex® Test Solution
- Six ampoules per box, 12 boxes per pack – 72 ampoules in total



Code: MA1FFS1B

Face Fit Test (Qualitative) Kit in Portable Carry Case

- Complete Face Fit Kit
- Qualitative RPE Face Fit Test Kit for FFP1, 2 and 3 filtering facepieces and half facemask respirators
- Training in the proper use and care of respirators has been mandatory in the COSHH (Control of Substances Hazardous to health) regulations since 1989
- There are various test methods, the two main options being Qualitative and Quantitative
- Enables wearers of negative pressure half masks and disposable respirators to be fit tested correctly and economically
- Skilled professional staff are available to conduct 'Train the Trainer' courses designed to enable companies to carry out the fit testing of wearers with complete confidence
- Robust hood
- Compact, sturdy and portable storage case
- Complete instructions in DVD and hard copy formats
- Spare parts available
- Full training package available

We can offer RPE Face Fit Testing through a third party provider



Code: MA1FF0

Hand tools

Pressurised Dust Suppression Water Bottle

- 15ltr tank
- Designed for dust suppression applications used in conjunction with all standard petrol cut off saws
- Standard hoselock style fitting



Code: HDSB-15L

Brushes & cleaning equipment

H-Class Industrial Vacuum Cleaner/Extractor



- H-Class extractor with HEPA Filtration
- Outperforms its M-Class predecessors, raising the bar to 99.995% filtration
- 110V or 240V available
- 60ltr/sec airflow (215m³/hr)
- Equipped with an extraction velocity monitor
- Lightweight at just 10kg and quiet at just 60dB
- Well equipped with an anti-static 3m hose, extraction port, 32mm steel tubes and crevice/brush/upholstery tools

Size:	Code:
110V	MO6HV2-110
240V	MO6HV2-240

H-Class Vacuum Cleaner Bags

- Pack of 10
- To suit MO6HV2 and MO6HV3



Code: MO6MB3

V-Tuf Mammoth Industrial Wet/Dry High Capacity Vacuum Cleaner/Extractor

- 3000W Triple turbine (110V) and 2000W twin-turbine (240V) solutions
- Airflow rate of 106ltr/sec (over 6000ltr/hr) and a tank size of 90liters allows large areas to be covered in one go
- Automatic float level prevents overflowing.
- Large wheels prevent snags and bumpers prevent marking
- Stainless steel float basket does not corrode and a cable length of 8m, hose length of 2.5m allows most rooms to be cleaned without having to unplug the unit
- Includes hose, wet head, dry head, tube extensions/angle, crevice and brush tools
- 25kg
- 90cm x 60cm x 50cm



Size:	Code:
110V	MO6WV1-110
240V	MO6WV1-240

M-Class Vacuum Cleaner/Extractor & Accessories

- With dustless sweeper and power tool take-off point
- 99.99% filtration efficiency (L-class is only 99%)
- Integrated filter shaker system and washable filters to prevent blockages saving you time
- Dry extraction only
- Can be connected to a power tool for extraction
- 5m cable length
- 15ltr tank
- 6kg
- 8ltr bags
- Yellow and black



Size:	Code:
110V	MO6MV1-110
240V	MO6MV1-240

Numatic Wet/ Dry Vacuum Bags

- To suit WV900-2
- Hepa
- Pack of 10



Code: MO5GC9

M-Class Vacuum Cleaner Bags

- Pack of 5
- To suit MO6MV1



Code: MO6MB1

Online ordering made simple

To support a fast and efficient delivery of safety, welfare and site equipment to your sites, our Support Hub is the service we provide when you sign up to an online account with us.

Our website allows simple navigation to find the products you need and offers a one-stop-shop to review all your orders, invoices and proof of delivery documents in one place.



Personal service

- Create a centralised portal to approve site requisitions
- View company specific and bespoke branded products
- Allows company to access agreed discounted price lists
- Add company favourite products to a specific account to promote certain products
- Access to personal documents such as bespoke brochures and order forms
- View your order history to identify trends in spending



Easy ordering

- Simple website navigation to find relevant products to purchase or place requisitions
- Review all your orders, requisitions and invoices in one place
- All Proof of Delivery links available for download, saving time for your finance team
- In addition to company favourites, add individual favourite products for quick, easy and repeat ordering
- Search and sort function on invoices allows easy access to invoices by date, cost and invoice number
- Add any extra details for delivery via our special instruction box



Full support

- Details of your dedicated account manager
- Our customer support team will check and verify your order

Register an account at onsite-support.co.uk

Or contact us for more information on 01293 744 444