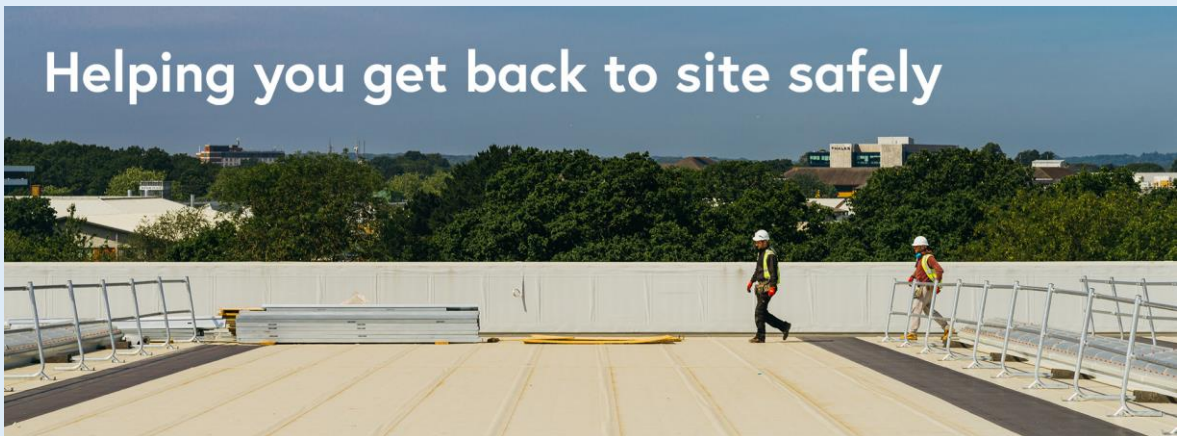


# Making your Site COVID-Secure

This guide is designed to help you adopt the expanded Construction Scotland's Safe Operating Guidance and help control the spread of COVID-19.



Written in accordance with the Construction Industry Coronavirus Forum (CICV) Safe Return and Restart v.2 issued 15<sup>th</sup> June 2020.

Intended for guidance only.

---

## Embracing the 'new normal'

Selecting the correct equipment, PPE and hygiene supplies is more important than ever. We have already seen that adjustments to work practices in accordance with revised site operating procedures, and adherence to social distancing guidelines will determine how fast a construction site gets back to operation - and how productive it will be during outbreaks of the Coronavirus pandemic.

As specialist suppliers to the construction industry, we want to reassure our customers that we are constantly monitoring and adapting to the supply of PPE and hygiene goods in every way we can.

We have reviewed our products and services against the Construction Industry Coronavirus Forum (CICV) Safe Return and Restart v.2 issued 15th June 2020, and offer you our recommendations in this document.



**It is paramount that construction projects operating during the coronavirus (COVID-19) pandemic ensure they are protecting their workforce and minimising the risk of spread of infection.**

**Every project should devise a plan considering this guidance, for implementation on site in consultation with all affected parties.**

**At OnSite Support, we don't just supply PPE, welfare and safety equipment. We want to support you the best we possibly can. We can advise on Best Practice and product selection for all areas of site and at each stage of construction.**

# Safe return and restart

## Expanded Guidelines to Underpin Construction Scotland's Safe Operating Guidance

The comprehensive guidelines cover site procedures, planning and administration advice. The sections highlighted below are featured within this brochure. [Download the full \*\*Safe return and restart\*\* document here](#)

- 1 Introduction
- 2 **What is Coronavirus / Key Control Measures**
- 3 **Physical Distancing**
- 4 Role of the Client
- 5 Health and Safety Documentation
- 6 **Site Management**
- 7 **Hygiene**
- 8 Return to Work Process - Worker
- 9 Return to Work Process - Sites
- 10 **Travel to / from Work**
- 11 **Prevention of Cross Contamination**
- 12 **COVID-19 Compliance Officer**
- 13 **Communal and Welfare Areas**
- 14 **Site Walkways and General Access**
- 15 First Aid Responder Guidance
- 16 Management of Meetings
- 17 **Management of Deliveries**
- 18 **Close Working**
- 19 COVID-19 Suspected / Confirmed Cases
- 20 Cleaning Spaces following Suspected / Confirmed Cases
- 21 Statutory Training Updates
- 22 Additional Reading
- 23 Reference Documents

# Safe Operating Guidance

## ❑ 2. What is Coronavirus / Key Control Measures

A combination of good personal hygiene and management of physical distancing can protect from infection. This is at the core of this document.

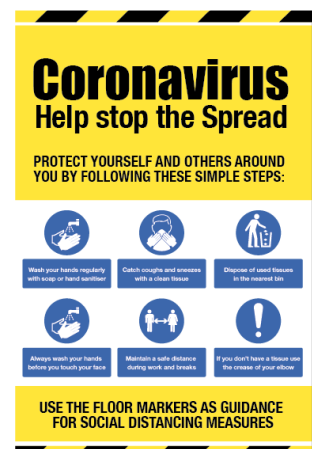
### Key Control Measures:

- Symptoms
- General Health
- Travel
- Hand hygiene
- Physical distancing
- Cough etiquette/Respiratory Hygiene
- Cleaning



Promote good practice and educate site workers with COVID-19 specific Signage >>>

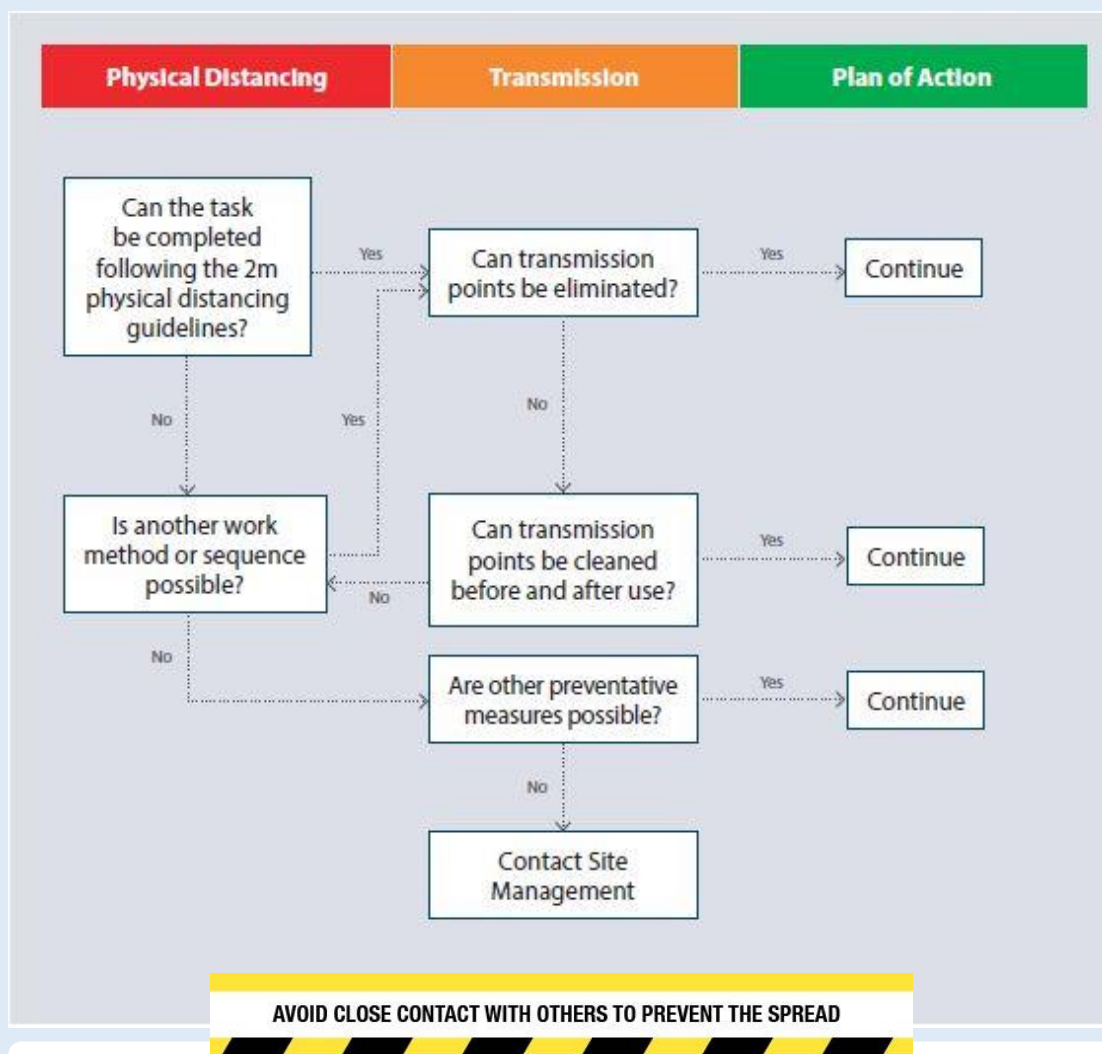
We can help you with signage bundles to promote awareness of the latest Government advice and reassure workers that suitable procedures are in place.



## ❑ 3. Physical Distancing

To slow the transmission rate of COVID-19, a physical distancing of minimum 2m is recommended by Health Protection Scotland.

The flow chart below is provided to assist in the review of work processes with physical distancing in mind.



Physical distancing solutions using RFID technology are recommended. See the ZoneRanger option page 24 >>

## 6. Site Management

### Responsibilities of site management for COVID-19

Site management must risk assess and manage safety and health hazards in the workplace. In the context of the application of the requirements of this guidance, responsibilities include managing and instructing site workers on the various control measures and compliance. This guidance identifies several key management responsibilities during the implementation of this plan.



Innovative solutions to help Site Managers comply with COVID safety guidance – pages 35-40 >>

#### General site work activities

1. Reduce – the number of persons in any work area to comply with the 2m physical distancing guideline recommended by the Scottish Government (e.g. relocate workers to other tasks, review work schedule and task sequence, consider starting and finishing times etc).
2. Review – work practices, mindful of close-working arrangements. Coach site personnel to self-assess their task for physical distancing and transmission points.
3. Supervise – or mentor appointment of COVID-19 Compliance Officer to specifically monitor adherence to physical distancing and hygiene etiquette.



We can help with coloured tabards and garment transfers to distinguish working teams >>



Have you considered re-usable PPE options? >>

Disposable PPE items create additional demand on waste removal resources. We continually look to improve our range of re-usable PPE items, such as the Traffiglove LXT range, fully washable and re-usable, and JSP Face Masks with \*press-to-check filters. See our full PPE range, including masks, visors, gloves and coveralls on pages 44 to 49.

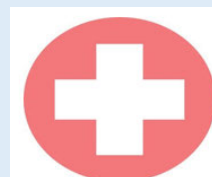
Ask us about our PPE Recycling Service including recycling bins, stickers, signage and collection >>

Regular waste and recycling collections will be essential to maintain levels of hygiene on site. More information >> page 52



Workers should be trained on how to remove and dispose of single-use PPE correctly >>

As well as **PPE** for First Aiders, we stock HSE approved **First Aid** kits, **Defibrillators**, mobile **Medical Stations** and medical supplies >> page 50



Have you reviewed your site First Aid and Medical Supplies? >>

Adapting to new ways of work could require new or alternative equipment. Depending on the season and weather conditions, extending delivery slots and site working hours could affect work capability due to low light conditions.



## Maintain safety and productivity with sufficient lighting provision



Are you considering changes to site working hours? LED lighting offers cost benefits for extended operations >>

Our LED lighting range includes **LED Festoon Kits**, **LED Globe lights** and work lamps for all activities. Adopting LED lights can help reduce the risk of accidents and hazards at construction sites, especially during low light hours. Using LED lights increases the visibility in the work area and ensures that worker safety while moving the lights. See more on pages 31 and 32.

**Equip delivery drivers and security personnel with LED head torches to facilitate work during extended hours of operations**

### Benefits of LED lighting:

1. LED products are lead and mercury-free, which contributes to environmental sustainability.
2. LED's can last longer than incandescent lamps, of up to 50,000-70,000 hours.
4. LED lights perform better than traditional alternatives in low temperatures, allowing for wider span of usage.
5. These lights have an extremely low UV and IR, which helps the environment.
6. Energy saving; these lights consume less electricity than traditional forms of lighting and are around 90-95% more efficient.



## □ 7. Hygiene

### Good hygiene and hand washing

All site personnel should follow this advice and encourage others to follow this advice too.



Current guidelines from Health Protection Scotland do not recommend the wearing of face masks or the undertaking of temperature testing at work; the preferred approach is to ensure physical distancing and good hygiene measures.

Hand-washing for 20 seconds using soap and water is recommended as the most effective action against the COVID-19 infection.

#### DO:

Wash your hands properly and often with soap and water or a hand sanitiser (60% alcohol content).

Hands should be washed:

- after coughing or sneezing
- before and after eating
- before and after preparing food
- if you were in contact with someone who has a fever or respiratory symptoms (cough, shortness of breath, difficulty breathing)
- before and after being on public transport if you must use it
- before and after being in a crowd (especially an indoor crowd)
- when you arrive and leave buildings including your home or anyone else's home
- before having a cigarette or vaping
- if your hands are dirty
- after toilet use.
- Cover your mouth and nose with a tissue or your sleeve when you cough and sneeze.
- Put used tissues into a bin and wash your hands.
- Clean and disinfect frequently touched objects and surfaces.

#### DON'T:

- Do not touch your eyes, nose, or mouth if your hands are not clean.
- Do not share objects that touch your mouth – for example, bottles or cups.

**Cleaning and disinfection guidance**

If you have a  or  new and continuous cough or high temperature

**stay at home for 7 days**, if you live alone  
**stay at home for 14 days**, if you live with others, including all household members

Only use **NHS 111** if your symptoms get worse or are no better after home isolation

---

**Stop the spread of coronavirus**

 **Wash your hands more often and for 20 seconds**

Use soap and water or a hand sanitiser when you:

- Get home or into work
- Blow your nose, sneeze or cough
- Eat or handle food

 **Cover your mouth and nose with a tissue or your sleeve (not your hands) when you cough or sneeze and throw the tissue away straight away**

---

 **Cleaning an area with regular household disinfectant** after someone with suspected coronavirus has left will reduce the risk of passing the infection on to other people

The amount of virus living on surfaces will reduce significantly after **72 hours**

If an area can be kept closed and secure, wait until this time has passed before cleaning

If an area has been heavily contaminated, such as with visible bodily fluids, from a person with coronavirus, **consider using protection for the eyes, mouth and nose** as well as gloves and apron

---

 Wherever possible, wear disposable or washing up gloves and aprons for cleaning. These should be double bagged, then stored securely for 72 hours then thrown away in the regular rubbish after cleaning is finished

 Using a disposable cloth, first clean hard surfaces with warm soapy water

Then disinfect these surfaces with the cleaning products you normally use. Pay particular attention to **frequently touched areas and surfaces**, such as bathrooms, grab-rails in corridors and stairwells and door handles

---

**Wash hands regularly** with soap and water, **and after removing** gloves, aprons and other protection used whilst cleaning



## ❏ 10. Travel to/from Work

Wherever possible, workers should travel to site alone using their company vehicle or their own means of transport.

Where public transport is the only option for workers, regular toolbox talks outlining how to reduce the possibility of infection should be considered.

Site management must consider the following:

- Parking arrangements for additional cars/vans and bicycles
- Providing hand cleaning facilities at entrances and exits. This should be soap and water wherever possible or hand sanitiser if water is not available
- How someone taken ill would get home.



Hand-washing for 20 seconds is still the most effective barrier against virus transmission. Sanitiser Gel should be used only when hand washing facilities are not available, and should always contain a minimum of 60% alcohol



Providing basic PPE and sanitiser to workers travelling on Public Transport could reduce sickness absence as well as prevent the spread of infection >>

Washable, reusable masks and disposable gloves could help protect your workforce when travelling to and from work >> page 44

Keep 60% alcohol sanitiser in all vehicles for when handwashing facilities are not available. Various size bottles + refills stocked >> page 34

**Pedestal Sanitiser Dispensers** offer a portable and economical solution to necessary sanitisation regimes, particularly at warehouses, delivery depots factories and many areas around site. Secure and robust but easily relocated. Holds 500ml bottles. Available in stainless steel or durable plastic. Page 36.



**Demarcation kit can be useful to create and segregate new site areas. What will you need? >>**

Encourage change of transport methods for your workers by providing adequate parking facilities and security. Demarcation tape, cones, barriers and signage can help create new areas. See more products on pages 26-27.

The **Armorgard-FormaStor** is a mobile fire-resistant storage unit with 5-lever deadlocks and jemmy-proof joins to protect valuable items on site. Available in four sizes 220L – 680L. See product on page 28.



**Security needs are changing, do you have sufficient storage and protection? >>**

What additional storage and security requirements will your site need? Padlocks, chains and bolts and other essential security items on page 28

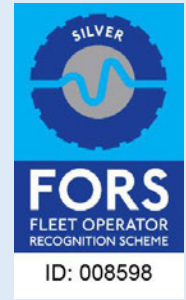
**Security personnel have been identified as "more at risk" to contracting Coronavirus. Make sure they are protected by adding equipment such as telescopic barriers, sneeze screens, and always providing adequate cleaning equipment, sanitiser and hand washing facilities**

## Physical distancing in vehicles

Physical distancing is advised when travelling in vehicles to/from work and when in site vehicles and operating mobile plant.

Suggested arrangements are as follows:

- Single occupancy of vehicles is preferable
- Sit as far apart as the vehicle allows.



**Supply a cleaning and sanitiser kit to all vehicles for easy, on-the-go hygiene and sanitisation >>**

Vehicle mounted hand washing stations such as the **H-Wash vehicle** are recommended for drivers in larger vehicles who handle goods and materials frequently – page 38. Alternatively a fixed **sanitiser dispenser** can be mounted in-vehicle to ensure quick and easy access to sanitiser for drivers. Ask us for information on the latest options.



**Plan a routine sanitisation schedule for your site vehicles >>**

Keep site vehicles, plant and equipment virus free in an instant with **Zapptizer Viricidal Sanitiser Canister – 22ltr ≈ 700-750 sq m**. Apply with **Gun & Hose Kit with Fogging Mist Nozzle**. A highly versatile sanitiser, Zapptizer can be used on plant, equipment, walls, floors, in hot and cold temperatures. See page 35.

We can also work with you to organise consolidated delivery schedules to help reduce the number of deliveries to site and, by limiting the delivery frequency, we can also reduce the risk of virus transmission.



Looking out  
for vulnerable  
road users

## □ 11. Prevention of Cross Contamination

### Site entry

The potential for cross contamination is higher at site entry and exit points and where there are high levels of surface contact points such as in welfare areas, site walkways, stairs access etc.



The **Clarisafe Sanitising Entry System** is ideal for areas with high footfall, such as site gates, turnstiles etc. The rapid spray system doses both sides of both hands and can process 30 people per minute. See page 40.

**No cleansing, no entry guaranteed!**

### Recommended control measures

The following are recommended control measures at access points to all construction sites:

- Turnstiles to be by-passed with open door access to site
- Thumb access devices should be by-passed/turned-off
- Stagger site's start times/finishing times to reduce queues
- Multiple entry points depending on site numbers
- Security guards to record all names rather than having multiple persons signing in using shared pen/booklet
- Restrict entry to workers and essential visitors only
- Sanitising stations in position at all site entry points
- Regularly clean common contact surfaces in reception, office, access control and delivery areas (e.g. scanners, turnstiles, screens, telephone handsets, desks, particularly during peak flow times)



- Reduce the number of people in attendance at site inductions and consider holding them outdoors wherever possible
- Delivery drivers should remain in their vehicles if the load will allow it and must wash or clean their hands before unloading goods and materials. Delivery drivers must be permitted to use welfare facilities where necessary
- All persons entering site must be directed to wash their hands and additional hand washing stations should be provided where possible
- Touch points should be minimised with a 'hands-free' approach where possible
- On access routes throughout site, one-way systems should be implemented where possible, barrier gates should be wedged open, and touch points should be cleaned regularly.



Supply adequate welfare supplies for your Hand-Wash stations – soap, 60% alcohol sanitiser and hand towels. Waste disposal and recycling bins.



Pop-up Hand-Wash stations are well suited to construction and infrastructure sites which may be spread over a large area, with many work zones >>

**Hand-Wash stations** suited to different applications. Choose from the **H-Wash-45 free-standing** model, or the **H-Wash-5 vehicle** mounted option. Premium **Armorgard mobile Hand-Wash** stations also available with either **mains-water** or **self-contained water fed** configuration. Full details of all stations can be seen on pages 38 and 39.



Increasing consumption of welfare items such as soap hand towels and disposable goods could harm the environment and affect our sustainability credentials. Talk to us if you want to know more





**Boards, posters, banners, tape, floor markings are all good ways to communicate with workers and the general public >>**

With many new procedures in place which can vary according to location, visual communications to suit different areas and activities help remind your workers of what they need to do, and help you comply with new regulations.



**A Thermal Monitoring System could be a worthwhile investment to help you monitor compliance on entry >>**

The medical grade thermal imaging system that detects temperature changes in the human body, identifies individuals with a fever and provides early diagnosis for certain types of virus. With facial recognition and a live alert function, it can be connected to various access-entry systems.

Developed to identify people with a risk of coronavirus-type fever, such as SARS-CoV, MERS-CoV & Covid-19, in locations with high entry and exit densities, such as construction sites. View more on page 40.



**Keep your sites safe and running efficiently. Check everyone's temperature as they access site, ensure they are fit for work and identify workers who have a fever or temperature.**

**OnSite Support are committed to innovation and improvement in our sector through product technology and data management**

## Cleaning to prevent contamination

Enhanced cleaning procedures should be in place across all sites to prevent cross contamination, particularly in communal areas and at touch points including:

- Taps and washing facilities
- Toilet flush and seats
- Door handles and push plates
- Handrails on staircases and corridors
- Lift and hoist controls
- Machinery and equipment controls
- Food preparation and eating surfaces
- Communications equipment
- Keyboards, photocopiers, and other office equipment
- Rubbish collection and storage points should be increased and emptied regularly throughout and at the end of each day
- Regular cleaning of site welfare facilities, handrails and touch points should be undertaken.

## Zapptizer Viricidal Sanitiser

is a highly versatile sanitiser, Zapptizer can be used on plant, equipment, walls, floors, and hands, in hot and cold temperatures. Suitable for canteens and eating areas. See page 35 for full details

**Viricidal Sanitiser** is certified to EN 14476 (1-minute contact time) against Bovine Coronavirus. Available in 750ml spray bottle or 5L refill for pressure sprayers. See all surface sanitisers on page 35.



**Eating areas carry a high risk of transmission. Ensure you hold adequate cleaning and welfare supplies >>**

To help you comply with new stringent cleaning regimes, we have added new welfare, hygiene, sanitiser products and accessories to our range so you can safely clean and disinfectant all surfaces, site equipment and facilities to help prevent the spread of coronavirus.

**Additional waste bins will be required for extra pre-packaged food waste and disposable items. Talk to us about eco-friendly alternatives >> page 52**

**'Keep 2m Apart Transfers' can be applied to your branded hi-vis waistcoats and jackets as a constant visual reminder of social distancing >> page 25**



## Tools, equipment and plant

- All tools and equipment should be properly sanitised to prevent cross contamination.
- Arrangements should be made for one individual to use the same tool, equipment and plant as much as possible. Make available cleaning material for all.
- Tools to be wiped down with disinfectant between each user. Organise work practices to reduce, eliminate or reduce transmission points and coach site personnel on the same.
- Cabs and touch points of site vehicles and plant (MEWPS, excavators, cranes, etc) to be thoroughly cleaned and a cleaning regime by plant operatives should be maintained daily thereafter.
- Consider provision of stickers for tools, equipment and mobile plant to encourage disinfection.



Consider cleaning procedures for the parts of shared equipment you touch after each use, thinking about equipment, tools and vehicles, for example, pallet trucks and forklift trucks



Reduce time spent on enhanced cleaning regimes by investing in a surface sanitiser and sprayer >>

**Viricidal Sanitiser** is certified to EN 14476 (1-minute contact time) against Bovine Coronavirus. Available in 750ml spray bottle or 5L refill for pressure sprayers. See all surface sanitisers on page 35.

**Site Welfare and Hygiene Standards are evolving. We can advise you how to keep up to date with Best Practice and recommend quality certified products.**

## □ 12. COVID-19 Compliance Officer

- The role of a COVID-19 Compliance Officer is to monitor the site activities to ensure physical distancing and hygiene rules are being maintained to protect health and reduce the spread of the COVID-19 virus.
- These key personnel should be clearly identifiable on-site with a distinguishable high-vis vest with COVID-19 Compliance Officer written on it, similar to the illustration provided.



Safety clothing certified to EN20471  
Class 2 Rail Standard compliant



Don't compromise the environment for safety this summer. Try the Eco-Viz safety clothing range >>

View our **Hi-Viz clothing** recommendations on pages 41 to 43. Hi-Viz polo shirts, waistcoats, jackets, trousers and coveralls. **We offer a full branded workwear service using embroidery or transfers.**

'Keep 2m Apart Transfers' can be applied to your branded hi-vis waistcoats and jackets as a constant visual reminder of social distancing >> page 25

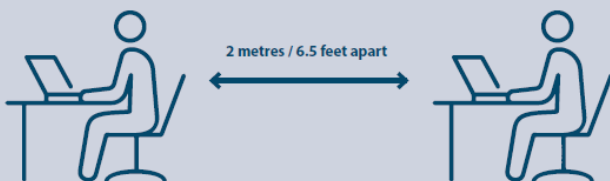
Use a COVID 19 Stenciling kit and floor markings to economically display social distancing measures and new guidance on using facilities. More info on page 25

## ❑ 13. Communal and Welfare Areas

**Toilets, Changing and Drying Rooms, Canteens eating arrangements all require changes to ensure physical distancing of 2m**

The following is suggested for canteens and eating areas:

- While there is a requirement for construction sites to provide a means of heating food and making hot drinks, a pandemic is an exceptional circumstance and workers attending site canteens should be advised where possible to bring a packed lunch and flask to help eliminate transmission points on microwaves and water pour points etc.
- Break times should always be staggered to reduce congestion and contact.
- Site personnel must be encouraged to wash their hands before eating.
- Hand cleaning facilities or hand sanitiser should be available at the entrance and exit of any room where people eat and should be used by all personnel when entering and leaving the area.
- Ensure a seating arrangement where workers sit 2 metres apart from each other while eating and avoid all physical contact with co-workers.
- Where catering is provided on-site, consider the provision of pre-prepared and wrapped food only.
- Payments should be taken by contactless card wherever possible.
- Tables should be cleaned between each use and sitting based on rota.
- All rubbish should be disposed of in a suitable bin.
- Tables should be clear when finished eating.
- All areas used for eating must be thoroughly cleaned after each use, including chairs, door handles, vending machines and payment devices etc.
- Provide illustrations of 2m spacing to clearly demonstrate social distancing.
- Handles on kettles, microwaves, fridges, etc should be cleaned regularly or between each use.

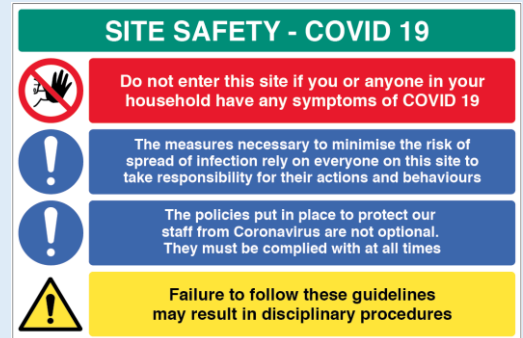


**i** Talk to us about modular furniture options - tables, seating, tents and other shelters, and all other site welfare needs >>

## □ 14. Site Walkways and General Access

To assist with physical distancing, consider the following:

- A one-way system on access routes throughout the site where possible. Increasing access points can help establish a one-way system (e.g. an additional HAKI stair to allow for one-way traffic up and down).
- Where a one-way system is not possible, consider widening pedestrian routes so physical distancing can be maintained on main site walkways.
- Marked up walkways can help give an indication of what 2m spacing looks like.



Demarcation kit can be useful to create and segregate new site areas. What will you need? >>

Site entry and 'area of safety' points must be coordinated, planned and visually marked out to reduce crowding and maintain social distancing requirements. See more on signage and marking – page 25.



Temporary and modular Partition Wall systems can be used to separate interior spaces within an area >>

**SpeedyWall** is a modular system which comes in kit form. Easy to install and re-configure for temporary facilities and segregated work-space. See page 30 for more information. Starter and Standard kits available.



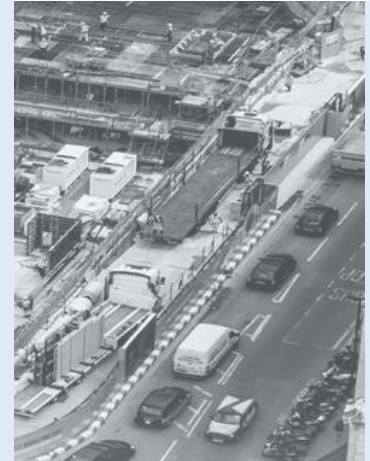
## □ 17. Management of Deliveries

### Site management should:

- Ensure that all delivery transactions enforce physical distancing.
- Agree a delivery protocol with suppliers and haulers.
- All deliveries must be planned with allocated times for collections/appointments/deliveries.
- Plan for paperless delivery acceptance and acknowledgements with suppliers to ensure materials management and material reconciliations are accurate.
- Ensure that hand washing facilities are available and convenient to set down and goods inward locations.
- Ensure there are appropriate sanitising arrangements at points of site access, egress and set down areas for raw materials and stock.



Looking out  
for vulnerable  
road users



We now offer a non-contact delivery service as standard



Consolidating deliveries will also reduce your carbon emissions, helping you meet sustainability targets



Sneeze screens can add virus defence to receptions, security huts, canteens and site offices. Sizes available >> page 29

## ❏ 18. Close Working



### Elimination of close working

Elimination of close working is preferable and should be investigated. For all companies and management putting personnel to work, it is critical that you explore every available option possible before putting personnel to work in < 2m close contact tasks.

- There are 2 types of work in the <2m transmission zone:
- A) no physical contact between colleagues



Tagging devices can alert wearers that they have breached physical distancing >>

– B) physical touching will occur (manual handling/pushing-pulling side by side, shared tools and equipment).

- Scenario B is of higher risk than scenario A.
- Scenario A – preferably, personnel shall wear full face shields and gloves. Alternatively, FFP3/FFP2/ surgical masks with eye protection and gloves.
- Scenario B – preferably, personnel will wear full face shields (alternatively, FFP3, FFP2 or surgical masks with eye protection) and should wear gloves and disposable suits. On completion, dispose/make safe any contaminated PPE with specific procedures to be agreed on site.
- If it is possible to erect a physical barrier/safety signage that does not impede the work between colleagues and does not increase work safety hazards (lack of communication/ visibility), please consider your options (e.g. hanging clear plastic/ mobile frame with plexiglass).

Note: The full-face visor replaces plexiglass as a physical airborne barrier between colleagues provided there is adequate air circulation.

- At the end of the task, all tools and equipment for scenario A and B work must be sanitised properly – as should any surfaces safe to wipe down.
- Forced ventilation internally could be considered for restricted confined spaces.



Full range of PPE including masks, shields, goggles and visors pages 44 to 49 >>

# Everything you need to get back to site safely

---

Physical Distancing Solutions  
Signage, Transfers and Markings  
Demarcation  
Security and Storage  
Screens/Hygiene Barriers  
Modular Partition Wall Systems  
LED Lighting  
Cleaning Essentials  
Hand Sanitisers  
Surface Sanitisers  
Sanitiser Systems  
Hand-Wash Stations  
Site Access  
Hi-Vis Clothing  
Face Masks  
Shields, Goggles and Visors  
Gloves  
Disposables  
First Aid and Emergency Equipment  
Canteen Consumables  
Waste and Recycling

---



# >> Physical Distancing Solutions

## ZoneRanger Physical Distancing Device

ZoneRanger is a wearable device that scans for other devices nearby, and alerts wearers when they get too close with an audible alarm, an LED warning light and vibration.

ZoneRanger can be worn on a lanyard around the neck, clipped to clothing or with a wrist strap.



1<sup>st</sup> July – software update to feature 1m and 1.5m alerts



**STOCK CODE : ZRWD1 – ZoneRanger Device pk-20**

## ZoneRanger – Key Features

- ZoneRanger device is small, light and comfortable to wear
- 10-hour battery life
- RFID technology
- Works out of the box – no additional hardware or software needed
- Innovative RangerHub comes in 5 different sizes to charge and update up to 100 devices simultaneously
- RangerHub enables easy re-programming (e.g. longer or shorter distances)

ZoneRanger solution packages available. Contact us for details



**STOCK CODE : ZRH2020 [RangerHub + 20 devices]**

## ZoneRanger - RangerHub

The ZoneRanger device is used in conjunction with the RangerHub, a docking station used to recharge the ZoneRanger devices, and update software programming to meet changes in government guidelines.

Rangerhub docking stations to hold 20, 40 or 60 ZoneRanger devices.



**STOCK CODE : ZRH4040 [RangerHub + 40 devices]**



# >> Signage, Markings and Transfers

## COVID-19 Signage Catalogue

Click image to download pdf and view the full range of signs



1st July - updated signage catalogue to include the latest social distancing advice



## Floor Distance Marking Tape

Yellow with Black Text

Roll size 33m



IMAGE NOT TO SCALE

STOCK CODE : SP-72707-CV19

## Branded Garments

**KEEP 2M APART !!**

Add the new **Social Distancing** guidelines to your bespoke branded hi-vis garments

Black - 300 x 46mm text

STOCK CODE : OSS-T-03RE



## >> Demarcation

### Pedestrian Barriers

Orange, Blue or Green  
Standard swivel feet or anti-trip feet  
Heavy duty

STOCK CODE : RE4CB20 – 1m x 2m Red

### Demarcation Boss Barrier

Free standing with 360° swivel feet  
Information sign can be attached  
100% Recyclable

STOCK CODE : RE4CCB4



### Barrier Fencing

Lightweight and economical  
1m x 50m rolls  
Ideal for establishing cordons and barriers

STOCK CODE : RE9B50 - 1 x 50m - Blue

### Adhesive Warning Tape

Mark out hazardous and safety areas  
Box of 24 rolls 50mm x 33m

STOCK CODE : TA3HR1-CV19



### Buddha Barrier

- 800 mm in height
- Chapter 8 compliant reflective strips on both sides
- 5 kg when empty but over 27 kg when filled with water
- Concave areas can be used for storage of spoil
- Easily stacked, easily lifted (forkliftable), easy to fill and easy to empty



### Buddha Barrier – Double Top

Double top may be added to raise height to 1.8m for added security

STOCK CODE : RE4BB2T-RED/WHT



STOCK CODE : RE4BB2 – RED/WHT

## >> Demarcation

### Expander Barrier

- Easy to transport and durable
- Flexible width, ideal for fencing off a variety of areas
- Fully compatible, easily integrated into a Titan barrier system
- Weight: 10.5kg

**STOCK CODE : RE4XBR**

### 3-Gate Manhole Barrier System

- Easily deploys and folds
- Length single gate 750mm
- 2.25m(L) x 1m(H)
- Weight: 6kg

**STOCK CODE : RE4WG3R**



### Crowd Control Walkway with Gate

- 2m(H) x 2.3m(W) with 990mm gap for pedestrian crossing point
- Weight: 22kg
- Finish: powder-coated red

**STOCK CODE : RE4TCCBWG7**

### Crowd Control Barrier

- Metal construction barrier that can be linked together
- Very robust and durable

**STOCK CODE : RE4TCCB1**



### Cones

**STOCK CODE : RE4C18 – 20" Road Cone**

**STOCK CODE : RE4NW18 – No Waiting Cone**

**STOCK CODE : RE4C35 – Heavy Duty Road Cone**

### Retractable Barrier System

to fit Road Cone

- For easy cordoning off areas
- Can connect multiple units
- Orange with 9m red/white tape

**STOCK CODE : RE7SK09**



## >> Security and Storage

### Armorgard Forma-Stor

- COSHH compliant vented/bunded
- 220L sump - White/Red
- 2075x1120x2255mm
- 326kg

30-min fire resistance, air vents and a fully welded sump to prevent leaks into the environment are included as standard

Security features also include 5-lever deadlocks and jemmy-proof joins to protect valuable items on site.

**STOCK CODE : FB5FS1**



Other sizes available

### Bike Storage Racks

Galvanised Steel for extra corrosion resistance  
Floor or Wall Mounted  
Single or Dual Height



**STOCK CODE : Contact OnSite Support**



Other styles and sizes available



### Chains

Plastic Sleeved, Square Link, High Security Chain  
Thermic-treated, zinc-plated,  
Use with shutter-locks and chrome-plated padlocks



**STOCK CODE : CH4S08 (8mm x 1.0m), CH4S101 (10mm x 1.0m), CH4S102 (10mm x 2.0m)**

### Squire Combination Padlock

Tough die cast alloy lock body  
Highly resistant to corrosion  
Dual compound body cover for comfortable handling  
4 combination wheels spaced comfortably apart

**STOCK CODE : PL9SCP6**

Body width 26mm  
Length 50mm  
Shackle height 26mm  
Shackle length 22.6mm  
Shackle width 8mm





# >> Hygiene Screens - Barriers

## RapidSan Screens

The RapidSan screen is a simple, effective solution for canteen social distancing on site. It is low cost, fast to deploy, and easy to clean. It can be made to any size and will help keep your workforce safe.

- Rapidsan Screen Single + Screen Single add-on
- Rapidsan Screen Double + Screen Double add-on
- Custom and bespoke options

**STOCK CODE : Contact OnSite Support**



Single units

Add-on units

## Rhinoguard Sneeze Screens

### Standard Screen 6600 Series

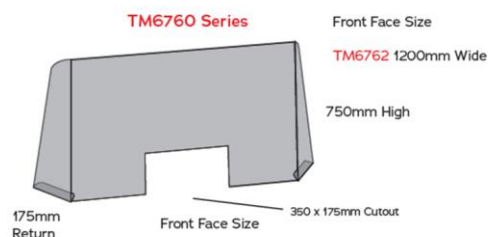
5mm Clear Acrylic with Desk/Counter-Top Fixing Bracket (Screw Holes in Bracket for Mounting)

**STOCK CODE : SS-72749-CV19 - 1000x1000mm**

### Premium Counter Screen 6700 Series

5mm Clear Acrylic Self Mounting with Flaps for VHB Tape or Screws

**STOCK CODE : SP-73161-CV19 – Sneeze Screen TM6762**



Other sizes available

## Rhinoguard Sneeze Screens

### Premium Modular Screen 6900 Series

5mm Clear Acrylic Self Mounting with Flaps for VHB Tape or Screws. Can be mounted together to make one continuous run by joining the side flaps

Other sizes available

**STOCK CODE : SP-72887-CV19 - Sneeze Screen TM6924**

**STOCK CODE : SP-72887-CV19 - Sneeze Screen TM6972**



# >> Modular Partition Wall Systems

## Speedywall Kit

Pack includes:

65 x Speedywall Panels

1.2m x 2m x 8mm thick

65 x Foot for Panel

10 x Header to create doorways

500 x Mixed connectors – 4 types – cross, T-junction, right angle & straight



**STOCK CODE : PO5SW1-CV19**

## Speedywall Starter Kit

**26 x Speedywall Panels** - 1.2m x 2m x 8mm thick

The main component to create the spaces you require which includes cutouts for cables

**26 x Wall Base** – 190mm x 1.2m

Fixes neatly into the bottom of the wall panel to create a standing base

**12 x Wall Support**

Create extra stability when creating longer straight walls. Use with 3 Tee or Cross connectors to give a straight wall extra support.

**6 x Door Support**

Simply bridge the door opening to give greater stability. Use with 2 straight connectors to bridge across the door opening.

**326 x Assorted Fixings**

The configurations are endless with the abundance of fixings provided:

**Straight Connector**

Used whenever you are running straight walls or for joining the door supports to the top of the wall panels.

**Tee Connector**

Use 3 Tee Connectors any time you need to join a panel to a straight wall or to add in a wall support for extra stability.

**Cross Connector**

Use 3 Cross Connectors any time you need to connect 4 panels together.

Kit is supplied in sheet format on a pallet and consists of 30 assorted sheets

**STOCK CODE : PO5WSK-CV19**

## >> LED Lighting

### LED Festoon Lighting Kit - Linkable

110V LED – 12m, 6 Bulbs

- energy-saving
- increased light output

STOCK CODE : LG6LFK4

STOCK CODE : LG6LFK4S – 30cm Splitter Cable

### LED Festoon Lighting Kit

- 110V LED 22m, 10 bulbs

STOCK CODE : LG6LFK2

Link up to  
20 fittings



### LED Globe Light with 5m 16A cable

- Long Life Expectancy: 35,000 Hours
- 2 Years product guarantee
- Perfect for indoor (75pcs of SMD 2835)

STOCK CODE : LG5G30



### BC 10W LED Light Bulb

- Energy efficient
- Perfect for indoor ( 10W and 860 – 900 lumen)

STOCK CODE : LG2LED2



## >> LED Lighting

### LED Varta Head Torch

Pivoting water-repellent head, with three-position slide switch

- Three white LEDs, one red LED
- 22 lumen output
- 30hr run time on white LEDs
- 38hr run time on red LEDs
- (3 x AAA batteries included)

**STOCK CODE : LA1VART1**



### CREE LED Head Torch

- Splash resistant to IPX4
- Three band fitting – over and around the head
- 180 lumen with 50m beam
- CREE LED technology and 5yr guarantee
- Tilt adjustment
- Non-contact infrared on/off switch (3 x AAA batteries included)

**STOCK CODE : LA1HT4I**



### LED Head Torch

**with White and Red-light Modes**

Fully-adjustable elasticated strap, with tilt-adjustable body

- Four operating modes: 1 LED @ 100%, 1 LED @ 50%, 2 Red LED solid and 2 Red LED
- Flashing 100 lumen and 57m beam
- Battery life: 8hrs
- Three ultra-bright LED (3 x AAA batteries included)

**STOCK CODE : LA1HT2I**





## >> Cleaning Essentials

### Spray and Wipe

750ml  
6 per pack

STOCK CODE : CJ2SWS1

### J Cloths

50/pk  
colours available

STOCK CODE : CJ1JC1



### Multi-Purpose Cleaner

750ml  
6 per pack

STOCK CODE : CJ2MP7



### Multi-Surface Disinfectant Wipes

100/pk,

STOCK CODE : CJ3DW1-CV19

### Surface Disinfectant Wipes

70% Alcohol

STOCK CODE : CJ1DW20-CV19



### Antibacterial Wet Wipes

Kills 99.99% germs

120/pk,

24 pk in carton

STOCK CODE : CJ3CW12-CV19



## >> Hand Sanitisers

### Alcohol Hand Sanitiser

Hand pump operation  
500ml  
60% alcohol  
24/pk

**STOCK CODE : CJ3LDP5-CV19**



### Alcohol Hand Sanitiser

100ml travel size  
60% alcohol

**STOCK CODE : CJ3LDP10-CV19**



### Alcohol Hand Sanitising Gel

Clean, care and protect your hands with Sanitising Hand Gel, with 60% ethanol formulation.

5L Refill

**STOCK CODE : CJ3LDP50P-CV19 – 60% Alcohol**

**STOCK CODE : CJ3LDP5070-CV19 – 70% Alcohol**

Available to order

**STOCK CODE : CJ3LDP5080-CV19 – 80% Alcohol**

Available to order



## >> Surface Sanitisers

### Viricidal Cleaner

EN14476 certified (1-minute contact time) against Bovine Coronavirus (BCOV) as a surrogate for other members of the Coronavirus family including MERS-CoV

**STOCK CODE : 750ml Spray - CJ2SWU1-CV19**

**STOCK CODE : 5L Refill - CJ2SWU5-CV19**

**STOCK CODE : Backpack – WC3BPS15**

**STOCK CODE : Pressure Sprayer – WC3S08**



### Zapptizer Instant Sanitisation

A highly versatile sanitiser, Zapptizer can be used on plant, equipment, walls, floors, in both hot and cold applications.

\*Food Safe. It is completely safe to use on all surfaces, is non-toxic, non-corrosive and emits a pleasant berry odour.

Zapptizer deals rapidly and effectively with a wide range of bacteria, viruses, fungi, moulds, etc.

**STOCK CODE : CJ3ZG1 – Gun & Hose Kit**

**STOCK CODE : CJ3ZC1 – 22ltr Canister**



**STOCK CODE : CJ3ZCT1-CV19 – Trolley**

# >> Sanitiser Systems

## RapidSan Tough Hand Sanitisation Unit

A convenient, durable hand sanitation unit for high foot fall areas. Manufactured from highly durable compact laminate for exterior use. It is weather-proof with a security fixing option. This product is the ultimate solution for high footfall environments. Available on heavy duty castors or a plastic pallet.

**STOCK CODE :** Contact OnSite Support

- No mess- Highly effective mist spray
- Position and go, no services required
- Long-lasting refills for high traffic areas
- 12,000 rapid applications per canister
- Suitable for all weather
- Custom graphics and finishes available option
- Pallet/mobile option



## Stainless Steel Pedestal Dispenser

- Pedal Activated
- Hands free operation
- 100% mechanical
- No installation required
- Durable and robust
- Holds 500ml bottle
- Anti-theft

**STOCK CODE :** CJ3SS1-CV19



## Plastic Pedestal Dispenser

- Plastic Base – Aluminium Tube
- Pedal Activated
- Hands free operation
- 100% mechanical
- No installation required
- Durable and robust
- Anti-theft

**STOCK CODE :** CJ3PS2-CV19



## >> Sanitiser Systems

### Sanistation Mini

Easily relocatable with two wheels  
Both sides can be utilised  
Sealed lockable compartment, with padlock facility  
Complies with EN 1276, EN 13704, EN 14476 and EN 1500  
Suitable for external use

Includes as standard:

- 1 x pump dispenser
- 1 x 750ml hand sanitiser
- Relevant sanitising signage

Dimensions: 700mm x 600mm x 1725mm

**STOCK CODE : IH2SS-CV19**





# >> Hand-Wash Stations

## H-WASH 45 Hand-Wash Station

- Portable and self-contained. Units require no plumbing or electrics and can be installed anywhere
- Lightweight and suitable for use in high footfall environments
- Hands-free water supply with foot operated tap
- Self-contained unit with easy-fill 45L storage tank, providing enough water for up to 225x 20s hand-washes
- Grey water is drained into a removeable collection drum
- Unit includes soap dispenser, paper towel dispenser, 25L grey/waste-water collection drum and waste bin

H-WASH 45 Weight: 25kg (unit only)  
Dimensions: 620(W) x 1450(H) x 560(D)mm

**STOCK CODE : CJ3HW45V-CV19**

Branding available on orders of 25+ units



Manufactured from 70% recycled plastic

## H-WASH 45V Vehicle-Wash Station

- Slimline and compact making it suitable for delivery vehicles
- Hands-free water supply with foot operated tap
- Self-contained unit with easy-fill 45L storage tank, providing enough water for up to 225x 20s hand-washes
- Grey water is drained into a removeable collection drum
- Unit includes soap dispenser, paper towel dispenser, 25L grey/waste-water collection drum and waste bin

H-WASH 45V Weight: 20kg (unit only)  
Dimensions: 720(W) x 1320(H) x 220(D)mm

**STOCK CODE : CJ3HW45V-CV19**

Branding available on orders of 25+ units



Manufactured from 70% recycled plastic

## H-WASH 5 Mini Hand-Wash Station

- Slimline and compact making it suitable for delivery vehicles and small spaces
- Hands-free water supply with foot operated tap
- Self-contained unit with easy-fill 5L storage tank, providing enough water for up to 25x 20s hand-washes
- Grey water is drained into a removeable collection drum
- Unit includes soap dispenser, paper towel dispenser, 25L grey/waste-water collection drum and waste bin

H-WASH 5 Mini Weight: 8kg (unit only)  
Dimensions: 483(W) x 660(H) x 148(D)mm

**STOCK CODE : CJ3HW5V-CV19**

Branding available on orders of 25+ units



Manufactured from 70% recycled plastic

## >> Hand-Wash Stations

### Sanistation Pro – Mains Fed Self-Contained Mobile Wash Station

Mains Water Feed & Waste Pipe Connection Points  
Customisable Dispensing Space for Signage and:  
Soap, Gel, Foam, Wipes, Towels, Cream  
2x Pivot Kick Bins  
Foot Operated Tap Pedal  
Castors and Forklift Pockets  
Locking Cabinet

**STOCK CODE : IH2SSPM-CV19**



Front



Rear

### Sanistation Pro – Tank Fed Self-Contained Mobile Wash Station

Self-contained Fresh and Waste-Water Containers  
Customisable Dispensing Space for Signage and:  
Soap, Gel, Foam, Wipes, Towels, Cream  
2x Pivot Kick Bins  
Pump Operated Tap Pedal  
Castors and Forklift Pockets  
Locking Cabinet

**STOCK CODE : IH2SSPT-CV19**



Front



Rear

## >> Site Access

### Clarisafe Access System

**Simple** - rapidly doses both sides of both hands

**Guaranteed** - no cleansing, no entry

**Fast** - can process 30 people per minute

**Visual guidance** - clear, simple guidance for ease of use

**Multiple applications** - can be used in factories, receptions - anywhere

**Affordable** - reduced sick days - one user reported a drop in the rate of absenteeism from 2.2% - 0.5%

**Wall Mounted or Floor Standing**

**STOCK CODE : Contact OnSite**

**Sanitising Entry System:** the unit will only allow access after the individual's hands have been sanitised



### Thermal Monitoring Solutions

The medical grade thermal imaging device is an imaging system that detects temperature changes in the human body, identifies individuals with a fever and provides early diagnosis for certain types of virus.

It has been developed to identify people with a risk of coronavirus-based fever, such as SARS-CoV, MERS-CoV & Covid-19, in locations with large entry and exit densities, such as airports & construction sites.

**STOCK CODE : Contact OnSite Support**

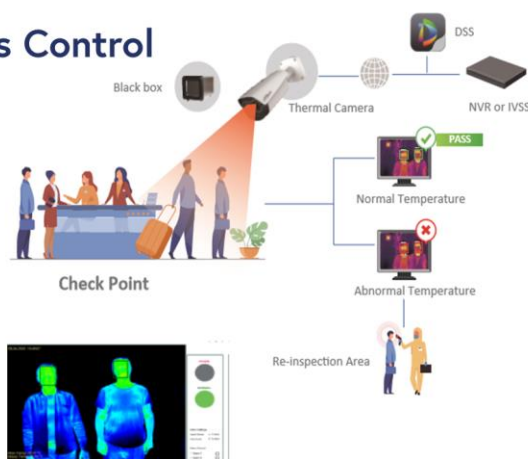


**Keep your site safe and running efficiently.**  
**Check individual's temperature as they access site and ensure they are fit for work.**

### Temperature Monitoring Device with Facial Recognition and Access Control

#### Key features:

- Sensitive to +/- 0.3C
- Working range - Between -5C and +30C
- Up to 30 targets detected at the same time
- Provides real time audible and visual alerts
- Audible alarm as standard. Email alerts with a network connection.
- Collects and stores historical data to allow easy proof of monitoring/compliance
- Scalable & futureproof – Attach up to 4 cameras
- Minimises risk and avoids the need to break social distancing rules by using a hand-held solution.





## >> Hi-Vis Clothing

### Hi-Vis Waistcoat

- Polyester hi-vis waistcoat with velcro front fastening
- Fabric: 100% polyester
- EN20471 Class 2

**STOCK CODE : VS2W20-03- S/M/L/XL/2XL/3XL/4XL Yellow**

**STOCK CODE : VS2O20-04-S/M/L/XL/2XL/3XL/4XL Orange**

Add branding and social distancing reminders to your Hi-Vis clothing using our Garment Transfer service



### Hi-Vis EcoViz Polo Shirt

#### 100% Recycled Polyester Short Sleeve Polo Shirt

- Crafted from recycled polyester
- Suitable for warmer weather conditions
- Wicking polyester fibres channel moisture away from the body
- Quick drying and comfortable for the wearer
- Sun protection to UPF 40+
- Strategically positioned reflective tape allows optimal wearer movement

**STOCK CODE : VS2EVP2-03-S/M/L/XL/2XL/3XL/4XL Yellow**

**STOCK CODE : VS2EVPO-03-S/M/L/XL/2XL/3XL/4XL Orange**



Long Sleeve  
also available

### Light-weight Hi-Vis Polycotton Trousers

- Lightweight and comfortable at only 210GSM fabric weight yet still water-repellent and stain-resistant.
- Side waist elasticsation ensures comfortable fit.
- Two cargo pockets and back pocket with reflective piping
- Fabric: 80% cotton, 20% polyester, 210gsm
- Triple-needle stitching on all main seams
- YKK brass zipper
- Seven belt loops
- Class 1 EN20471 compliance

**STOCK CODE : VS3WCY30-03- 28-46 (R/S/T) Yellow**



Also available  
in Orange

## >> Hi-Vis Clothing

### Hi-Vis 3-Part Orange Waistcoat

- Rail Standard compliant
- Adjustable stud front fastening
- Quick-release velcro shoulder and side seams
- Fabric: 100% Polyester
- EN20471 Class 2

**STOCK CODE : VS1WLU-04-S/M/L/XL/2XL/3XL Orange**



### ProGarm 4617 FR AS Hi-Vis Trouser

- Rail Standard compliant
- Great comfort: breathable, soft to wear, fantastic touch
- ProGarm® VXS+ HVO 360W inherent fabric
- Highly durable: colour fast with less than 3% washing shrinkage
- Two hip pockets with flaps, combat pocket on leg with phone pocket and rear pocket with flap
- 50mm FR AS reflective tape with double stitching
- Triple-stitched side seams
- EN11612, EN1149, EN471 compliant

**STOCK CODE : VS4FRT10-04-30R/30S/32R/32T/34-46 (R/S/T)**



### Heavy-weight Hi-Vis Polycotton Trousers

- Rail Standard compliant
- Built-in kneepad
- With water-repellent and stain-resistant finish
- Two cargo pockets with reflective piping
- Back pocket with reflective piping, two waist pockets and internal knee pad pockets
- Triple-needle stitching on all main seams
- YKK brass zipper
  - Side waist elasticsation
  - Five belt loops
  - Fabric: 80% polyester, 20% cotton, 280gsm
  - Orange
  - Level 2 reflective tape
- EN20471 Class 2

**STOCK CODE : VS4WCO10-04- 28-46 (R/S/T) Orange**



Also available  
in Yellow

## >> Hi-Vis Clothing

### Hi-Vis PVC Rain Jacket & Trousers

- Waterproof (Nylon/PVC rainwear)
- Elasticated waisted trousers
- Heavy-duty zip fastening front
- Front flap pockets
- Concealed hood

**STOCK CODE : VS3LW25-04- S/M/L/XL/2XL/3XL Orange**



Also available  
in Yellow

### CR2 Reflective Decal Sticker Set to suit Evo 2/3 Helmets

- Pack of 10 in Green (Also comes in Silver)
- Allows you to add extra visibility to your head protection
- On average 60% more reflectivity than standard reflective clothing material

**STOCK CODE : HM1CR3-FIRSTAID**



### LED High Vis Exec Waistcoat

**Integrated LEDs to front and rear to maximise visibility**

- 16 LED lights to front and rear with 3 modes
- Multiple pockets offer excellent personal security
- Clear ID pocket for security passes and cards

**STOCK CODE : VS7LW1-04-S/M/L/XL/2XL/3XL**



## >> Face Masks

### Disposable Protective Face Mask

3-Ply Protective Mask

Earloop fastenings

50/pk

**STOCK CODE : MA13P1-CV19**



### Basic Washable Cotton Mask

- 100% Cotton
- Nose support integrated in the upper part
- Washable at 60 degrees up to 25 washes

**STOCK CODE : MA1WM5-CV19**



### Premium Washable Reusable Hygiene Mask

25/pk

**STOCK CODE : MA1WM1-CV19**



### FFP2 Fold Flat Mask

20 per box

**STOCK CODE : MA1MF2-CV19**



## >> Face Masks

### JSP Force8™ Half Mask (excluding filters)

- Typhoon™ valve offers superior low breathing resistance and a four-point suspension harness with quick-release buckles
- Made with a durable thermoplastic rubber offering a superior fit to most face shapes
- Accepts the full range of low-profile Force8™ filters, providing filtering protection against particulates, many gases and vapours
- Winner of the BSIF Product Innovation Award
- Conforms to EN140 (face piece), EN14387:2004 (filter performance), EN143:200 (filter performance)
- Will be particularly helpful against pandemic



**STOCK CODE : MA2JF8-M-CV19 MA2JF8-L-CV19**

### JSP Force8™ and Force10™ PressToCheck Filters

- Press2check offers daily face-fit reassurance and the design produces high-efficiency dust protection
- Passes dolomite and the closed design provides for improved hygiene
- Low profile and fully EN143 compliant
- Priced and sold in a pair (always replace filters as pairs and follow manufacturer's maintenance instructions)

Please note that these filters will not protect against the following:  
Organic vapours and gases with boiling points below 65°C  
Mercury  
oxides of nitrogen  
carbon monoxide

Specialist filters are available on request to protect against these.



**STOCK CODE : MA2PTC5-CV19**



# >> Shields, Goggles and Visors

## JSP Force 8 Splash Guard

- Easy fit onto JSP's Force™8 half masks
- Provides a layer of protection to block aerosols and droplets.
- Prevents from touching your eyes
- Easy to clean with soap water

The Force™8 Splash Guard can be fitted to a Force™8 half mask to reduce the likelihood of exhaled bacteria/virus hitting the wearers face. This product does not meet the requirements of EN166 (including splash protection or impact protection)

**STOCK CODE : MA2F8SG**



This product is not a PPE as defined by the EU PPE Regulation 2016/425.



## Shakoshield Face Visor

### Splashguard Clip-On Visor

- Clips onto any plastic hard hat or bump hat, where traditional head-band visors cannot be worn
- Lightweight and suitable to be worn for prolonged periods
- Non-claustrophobic and well vented
- Masks, safety goggles, prescription lenses or beard snoods can be worn underneath
- Patented non-return clips and non-release elastic for absolute safety

**STOCK CODE : HA2SKS-CV19**

\* Not certified or tested for impact protection

Pack Quantity: 12 /pk 144 /case



Visor: Food-Safe PET 400 mic, suitable for freezing  
Clips: Nylon and PLA  
Strap: Silicone



Shield Height: 205mm  
Shield Width: 325mm  
Field of use: Splash protection from droplets and small liquid particles  
Storage conditions: -10 to 30 degrees c  
Application: Clip onto front brim of plastic hats.



# >> Shields, Goggles and Visors

## Disposable Face Shields

Medical Grade with Anti-fog protection  
Optically clear visor for maximum visibility  
PU foam headband for long term comfort  
Soft elasticated strap  
Lightweight design  
Protects the face from splashing or spraying  
Can be worn with or without eyewear protection and face masks  
CE Marked

**STOCK CODE : HA2DFS-CV19**



## JSP Helmet Cough Guard

- Fits EVOLite®, EVO®2, EVO®3, EVO®4, EVO®5, micro peak and standard peak helmet variants
- Provides a layer of protection to block aerosols and droplets
- Prevents wearer from touching eyes & face
- The only JSP verified cough guard fitment
- Compatible with Sonis® ear defenders and all 2 & 4-point chinstraps
- Quick and simple cleaning with soap & water

The Helmet Mounted Cough Guard can be fitted to a JSP helmet to reduce the likelihood of exhaled bacteria/virus contacting the wearer's face. This product does not meet the requirements of EN166 (including splash protection or impact protection).

**STOCK CODE : MA2F8CG**



This product is not a PPE as defined by the EU PPE Regulation 2016/425.

## Eye Wear

### Sport Style Safety Goggles

Indirect vents  
Adjustable strap  
10 per pack

**STOCK CODE : GG2B282**

### Safety Glasses

Ultra lightweight glasses  
12 per pack  
Clear or Grey colour

**STOCK CODE : SP1CEC1 - clear | SP1CET2 - grey**



## >> Gloves

### Traffiglove LXT Washable Gloves

The primary goal for LXT Treatment is to enhance durability and extend the wear life. During manufacture, glove fibres are coated and bonded with a patent-pending formula.

The treatment creates a protective layer which is water, oil and dirt resistant. This shields the glove fibres from damage, reducing the amount of wear and tear the glove suffers and the likelihood of stains from contaminants. Not only this, but the gloves are quick to dry and super breathable.



STOCK CODE : GLTG1240 LXT Cut Level A Glove - Red

STOCK CODE : GLTG3240 LXT Cut Level B Glove - Amber

### Traffiglove LXT Washable Gloves



STOCK CODE : GLTG5240 LXT Cut Level C Glove - Green

STOCK CODE : GLTG6240 LXT Cut Level E Glove - Green

Click image  
to download  
washing  
advice sheet



# >> Disposables

## Disposable Nitrile Gloves

- Natural rubber latex-free gloves
- Can be used for cleaning purpose
- Helps to avoid transmission of germs
- Single use only

STOCK CODE : GL2VD5-08-CV19 GL2VD5-09-CV19



## Nitrile Gauntlets

- Excellent sensitivity and flexibility
- For cleaning, maintenance, and light assembly tasks
- Semi-reusable and can be cleaned with soap, detergent
- Good alternative to single use Nitrile Disposable Gloves

STOCK CODE : GL1NG1-08/09/10



## Disposable Overshoes

- Anti-slip textured surface at the bottom
- Ideal for protecting carpets and flooring
- Helps to reduce virus transmission
- 50 pairs per pack

STOCK CODE : GL2LD15-07/08/09/10/11-CV19



## Disposable Hooded Coveralls Type 5/6

- Strong and robust providing excellent chemical barrier
- Freedom of movement
- Elasticated hood, back, wrist and ankles
- Available in White / Orange

STOCK CODE : BL3DX561-02-M/L/XL/2XL-CV19



STOCK CODE : SDT200-M/L/XL/2XL - TYVEK

# >> First Aid and Emergency Equipment

## Thermometer

### Non-Contact Infrared Thermometer

Large backlit LCD Display

One Press Operation

Measuring Distance 3-5cm

Temperature Measuring Range 34.0°C – 42.0°C

Accuracy of 0.1°C



\*Requires 3 x AAA batteries (not included – code LA3LR03)

**STOCK CODE : TM2MR1-CV19**

## HSE First Aid Kit

### 50 Person HSE Approved Kit including:

- No 16. eye dressing x 6
- 12cm x 12cm medium dressing x 12
- 18cm x 18cm large dressing x 4
- Elite wash proof plasters, pack of 20 x 3
- Non-woven triangular bandage x 8
- Nitrile disposable gloves, pair x 3
- HSE guidance leaflet x 1
- Moist cleansing wipes, singles x 20
- Assorted safety pins, pack of 6 x 2
- Plastic box, dark green: 270mm x 340mm x 100mm



10 and 20 person kits also available

**STOCK CODE : FA3L50**

## Heartsine Defibrillator Pad

- One PAD-Pak™ combined battery and electrode cartridge
- 4yr shelf time and 8yr warranty
- Carry case (yellow/blue)
- User manual, quick reference card
- Easy-to-use: two-button operation with clear and simple voice and visual prompts
- Easy to maintain with combined battery and electrode cartridge
- Fastest time to first shock delivery: Heartsine defibrillators have a charging time of just 8 secs
- Highest industry IP rating of IP56, providing protection against dust and water ingress



Delivers a lifesaving shock in more cases than other defibrillators, the impedance operating range of the Heartsine devices is 25-230ohms



**STOCK CODE : FA6HD3 – fully automated**

**STOCK CODE : FA6HD1 – with CPR advisor**



# >> Canteen Consumables

## Triple Walled Cups

- 12 oz Premium cup - no need for clutch sleeves
- Made from sustainable paper
- Available with lids

**STOCK CODE : CE3TWC12**



## Compostable Single Walled Paper Cups

- Made from sustainably sourced paper providing superior levels of insulation
- Internal bioplastic lining derived from a natural and renewable resource
- 100% biodegradable and compostable. **In just 6-8 weeks our paper cups can be turned into plant fertiliser (in composting environment)**
- Available with lids

**STOCK CODE : CE3SBC8 (8oz) and CE3SBC12 (12 oz)**



## 1 Ply C-Fold Hand Towels

Economical 1-ply hand towels  
230 x 250mm - Green  
Use with dispenser DS0957  
Pack of 2520

**STOCK CODE : HT1101**



## 2 Ply Deluxe C-Fold Hand Towels

Soft, super-absorbent 2-ply hand towels  
230 x 305 mm - White  
Use with dispenser DS0957  
Pack of 2520

**STOCK CODE : HT8395**



## Canteen Consumables

### Disposable Plates

23cm  
Pack of 100



**STOCK CODE : CE3PP2**

**STOCK CODE : CE3DCK2 - Knife**

**STOCK CODE : CE3DCF1 - Fork**



### Plastic Knives, Forks, Dessert Spoons and Teaspoons

100 per pack

**STOCK CODE : CE3DS3 - Dessert Spoon**

**STOCK CODE : CE3DCT4 - Teaspoon**

## >> Waste and Recycling

### PPE Recycling

Collection service of 1 x 240L wheeled bin containing PPE for recycling (with lid and signage)

- Reduce waste to landfill by diverting to commercial recycling centers
- Save space on site
- Keep premises neat and tidy to reduce any health risk

**STOCK CODE : RC1PPE-240L - Bin**

**STOCK CODE : RC1PPE-COL - Collection**





# Resources

[Construction Industry Coronavirus Forum \(CICV\) Safe Return and Restart v.2 issued 15th June 2020](#)

[UK Government Guidance: Working Safely during Coronavirus \(COVID-19\)](#)

[UK Government Guidance: Coronavirus \(COVID-19\)](#)

[UK Government Guidance: COVID-19 and PPE](#)

[BUILD UK: Coronavirus – Impact on Construction](#)

[HSE: Working safely during the coronavirus outbreak](#)

[HSE: RIDDOR reporting of COVID-19](#)

[CITB-CC01: COVID-19 – Site operating procedures compliance checklist](#)

[CITB-CC02: COVID-19 – Health, safety and environmental risk assessment template](#)

[CITB-CC03: COVID-19 – A toolbox talk for construction workers](#)

[CITB-CC04: COVID-19 – Weekly site operating procedures checklist](#)

[Considerate Constructor – Best Practice Portal: Coronavirus](#)

Customer Support Team:  
Tel: 01293 744 444  
[hello@onsite-support.co.uk](mailto:hello@onsite-support.co.uk)  
[www.onsite-support.co.uk](http://www.onsite-support.co.uk)